



Collection Information:

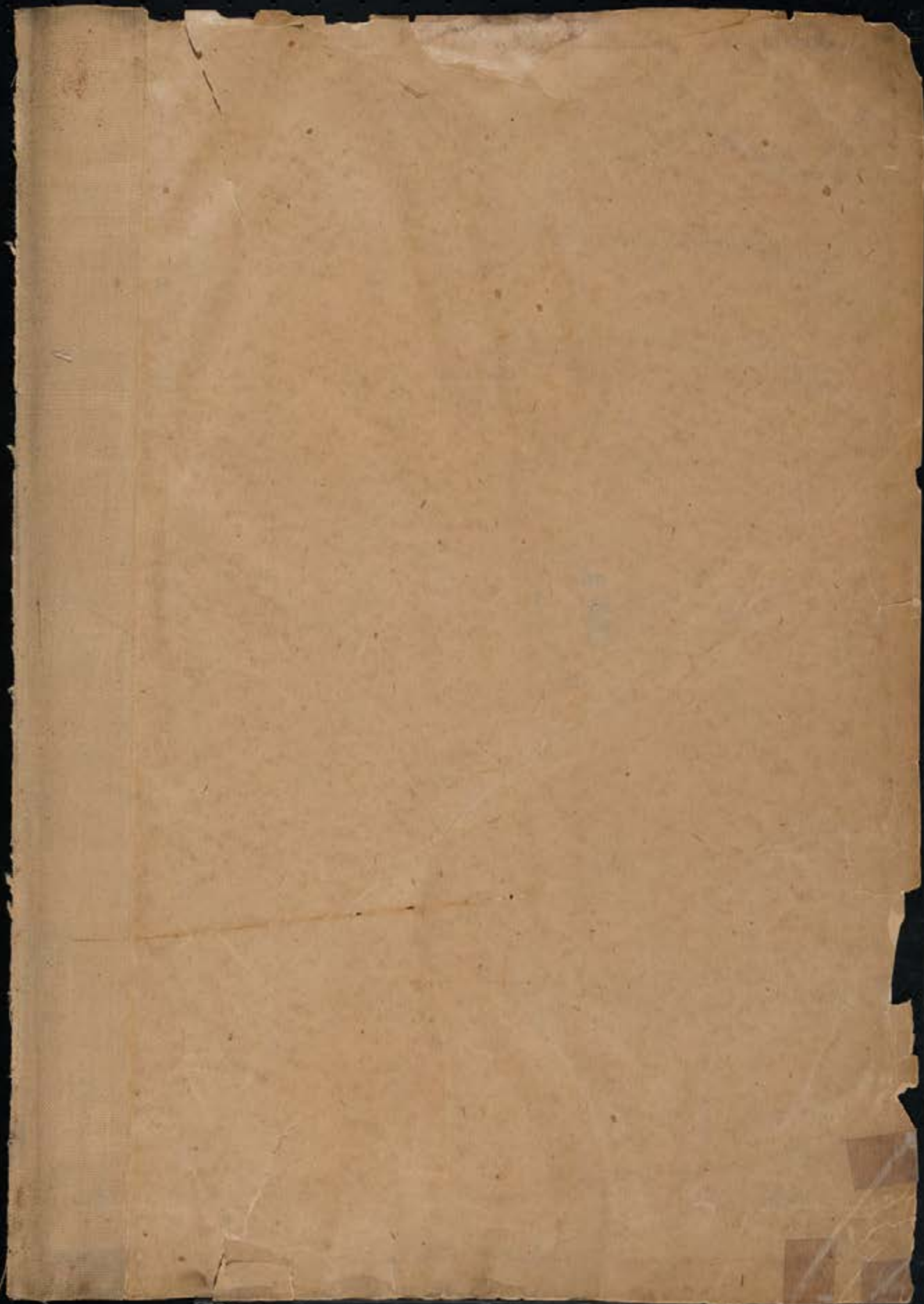
Volume: Photograph album, May 1896-November 1905.

Series: Photographs, 1896-1905.

Collection: Board of State Capitol Commissioners.
Records, 1892-1914.

Copyright Notice:

This material may be protected by copyright law (U.S. Code, Title 17). Researchers are liable for any infringement. For more information, visit www.mnhs.org/copyright.





Capitol Site

Looking South



Looking North



Looking West



Looking East



Channing Seabury Vice Pres^t Board State Capitol Comm^s

9 o'clock am May 6th 1896

breaking ground for the new Capitol



June 15th 96



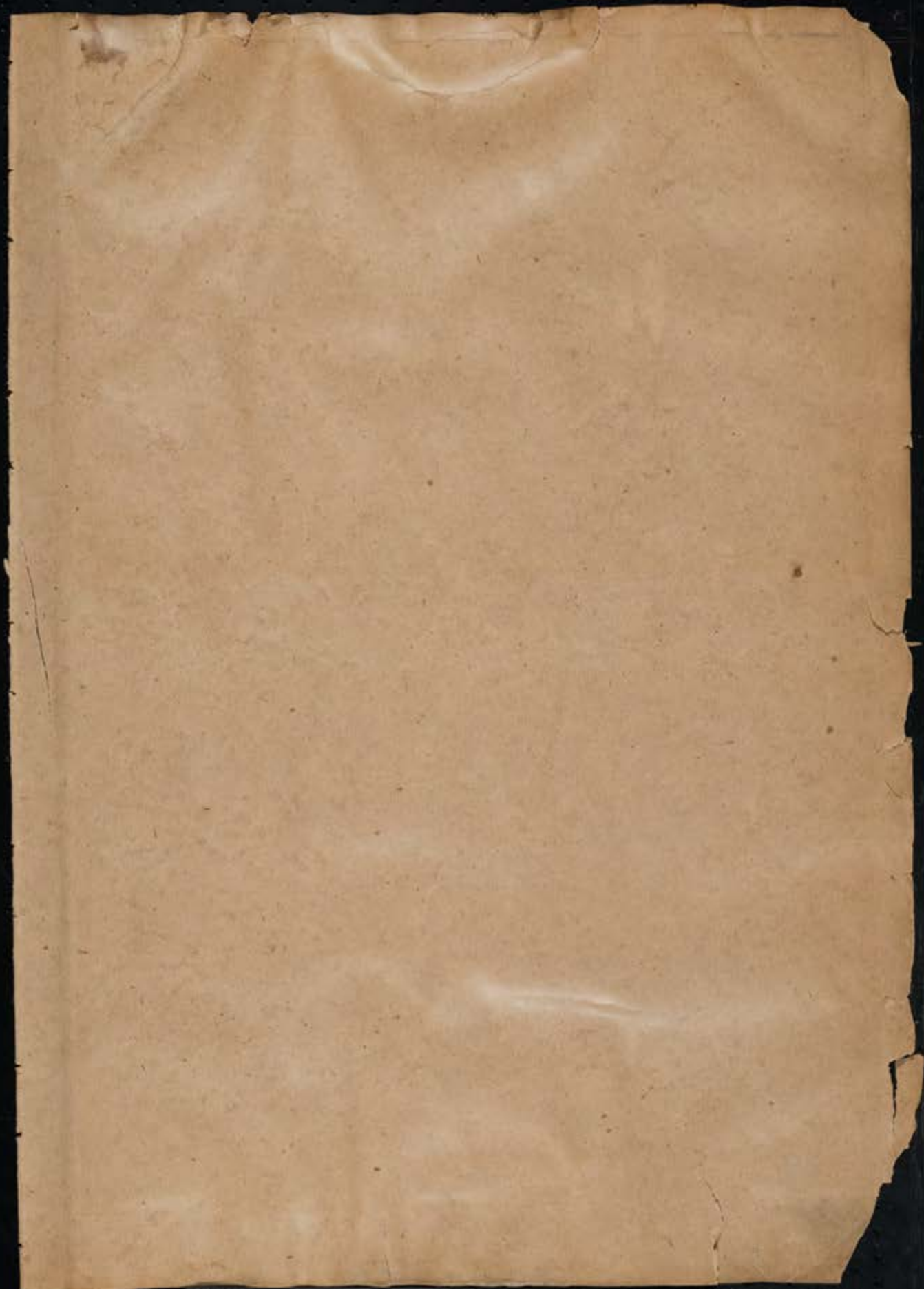
June 15th 96



June 16th 96



June 15th 96





July 1st 96



July 2nd 96



July 1st 96



July 1st 96



July 29th 96



July 29th 96



July 29th 96



July 29th 96



August 31st 96



August 31st 96



August 31/96



August 31/96



#10-3871-10 - Photo - H.C.C.

Sept 30th 96



Sept 30th 96



Sept 30th 96



Sept 30th 96



#11-062-11-14-TANK-S.W.C. Co.

October 31st '96



#11-062-11-14-TANK-S.W.C. Co.

October 31st '96



October 31 '96



October 31 '96



PAT. NOV. 22, 1890. U.S. PAT. OFFICE.

Nov 28th 96



PAT. NOV. 22, 1890. U.S. PAT. OFFICE.

Nov 28th 96



Nov 26th '96



Nov 26th '96

Completion Excavation & Foundation



After steel for basement floor was in place

Taken by Englund
May 19 97

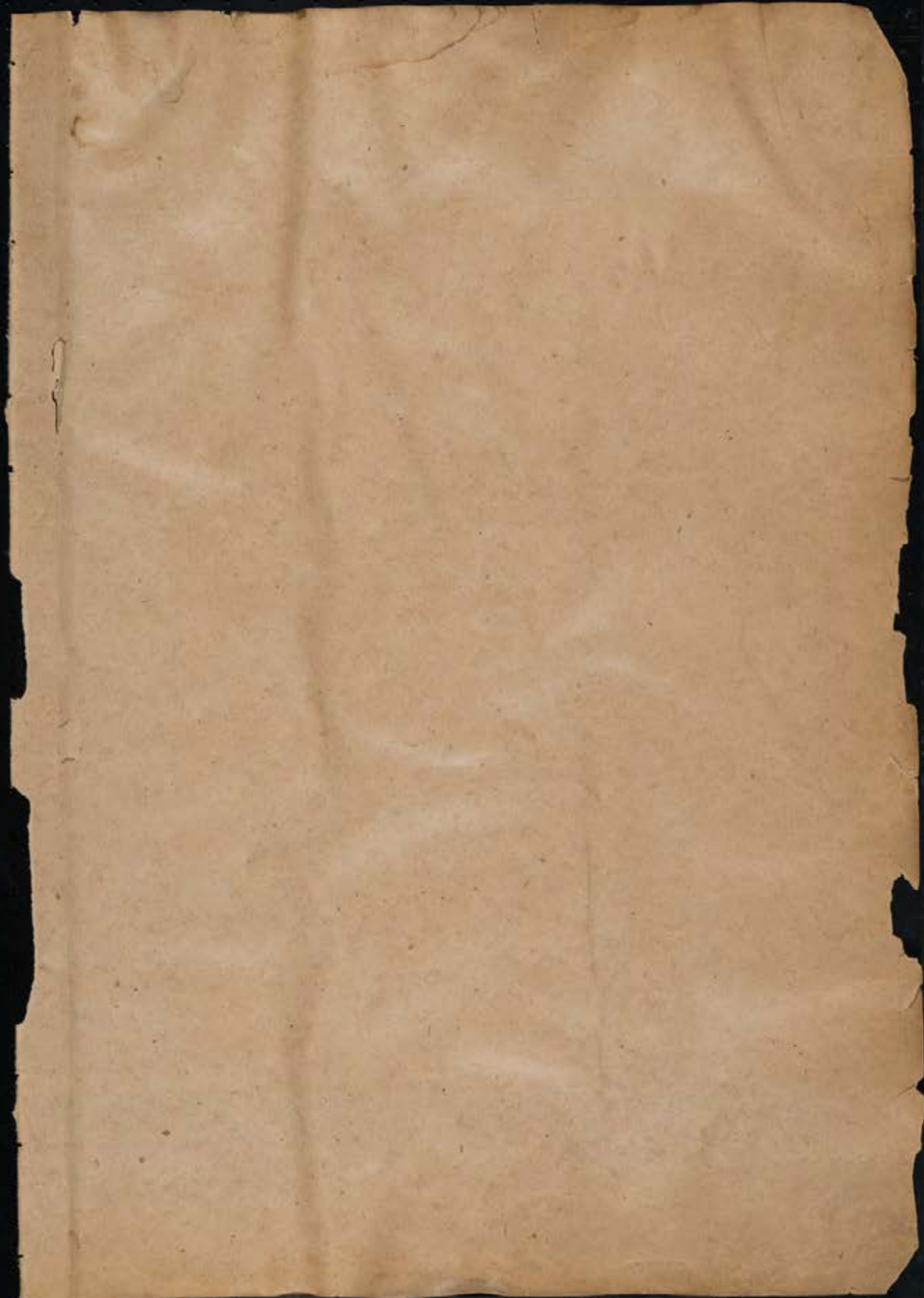


May 19th 97

Taken by Engstrom
May 29, 01



May 29th 1891





Sept 17th - 24th 1897 Concreting Sub-basement



Sept 23rd 1899

Concreting Sub-basement

Lauer Bro's & Miller

Contractors



April 30th 1898





April 30th 1898





June 6th 1898





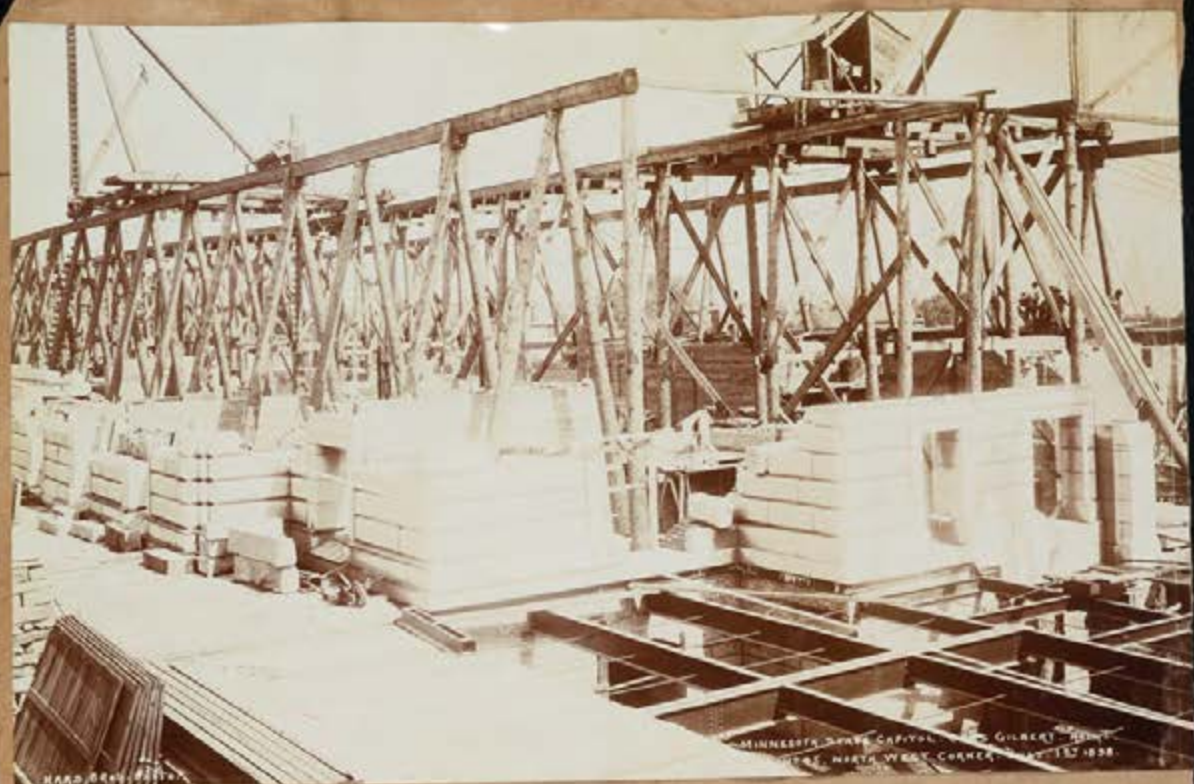
MINNESOTA STATE BRIDGE, LASS CREEK, ST. PAUL
NO. 23, SOUTH EAST CORNER, JUNE 6th 1898

HARRIS BROS. PHOTO

June 6th 1898

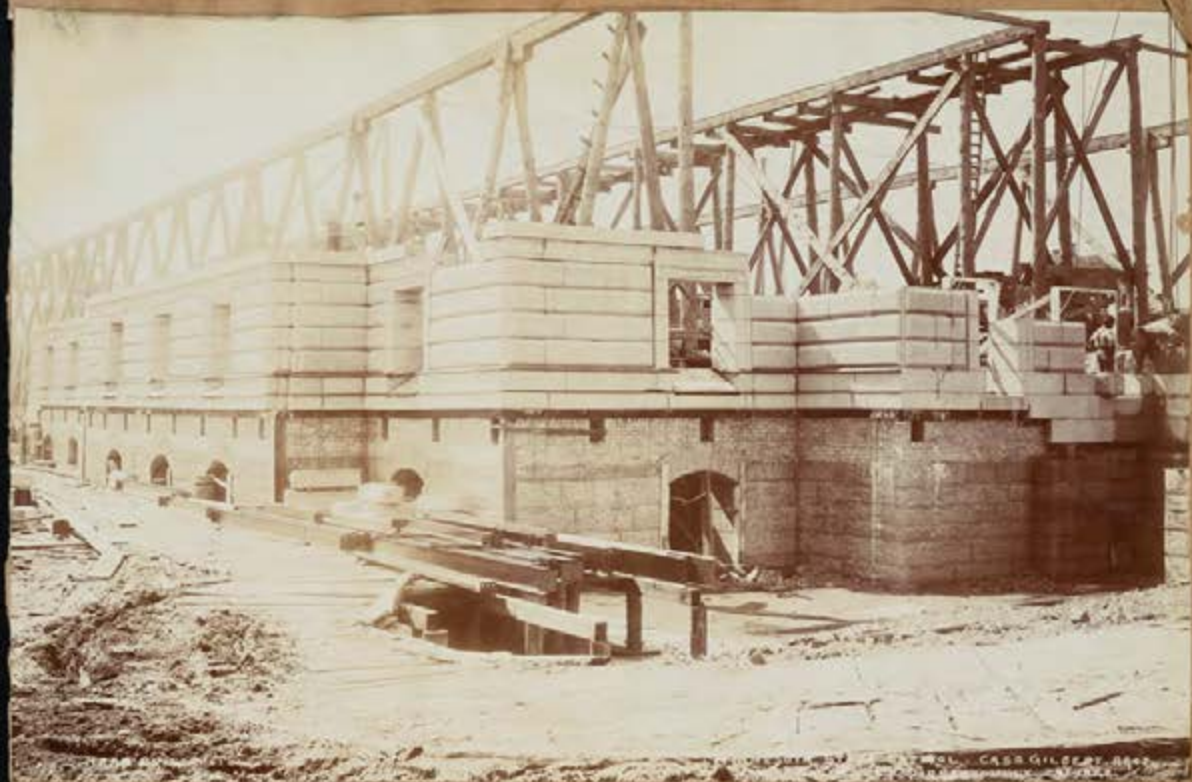


HARRIS BROS. PHOTO



July 15 1898





July 1st 1898





July 29th 1898



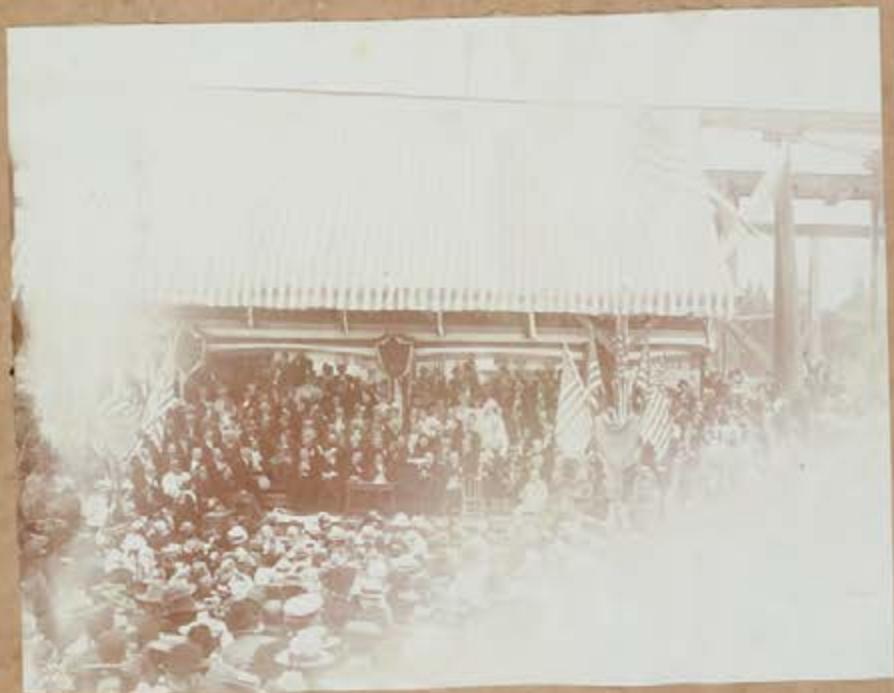


July 29th 1895





July 27th 1898 Laying of Corner Stone
by Ex Gov. Ch. Ramsey



Senator C.M. Davis delivering the oration

Programme.



LAYING OF THE
Corner Stone.

CAPITOL

OF

COMMISSIONER



LAYING OF THE

Corner Stone.

CAPITOL

OF

MINNESOTA.

JULY 27th. 1858.

1849



1898

*The Board
of
State Capitol Commissioners
requests the honor of the presence
of yourself and family
at the
ceremony attending the laying of the
Corner Stone
of the
New Capitol of Minnesota
at Saint Paul,
on July the twenty-eighth
Eighteen hundred and ninety-eight.*

The Northwestern
Press Clipping Bureau

100 North Dearborn Street, Chicago, Ill.

State
Argus
Hills

Notably every individual in town
has received an invitation to at-
tend the laying of the cornerstone
of the new capitol at St. Paul, on
July 27. The office of this paper
acknowledges the receipt of an in-
vitation and a very neat badge
which reads: "Guest, laying of
cornerstone capitol of Minn., July
27th, 1898." Thanks, gentlemen,
yours,
J. H. H.

The Articles

laid in the

New Capitol of Minn

on the 27th day of July A.D. 1898

of State of Minnesota.

Minnesota State Auditor.

Last published Annual Report of the Minnesota State Treasurer.

Legislative Manuals of Minnesota for the years 1893, 1895 & 1897.

History of Minnesota Volunteers in the War of the Rebellion, Vols. 1 & 2.

Volumes 4 and 5 of the Minnesota Historical Society Collections.

Minnesota Historical Society Publication, "How Minnesota became a State".

Congressional Directory of the 55th Congress of the United States.

History of the New Capitol legislation.

The original draft of the bill introduced in the Legislature for the erection of a New Capitol.

Mills' History of Minnesota.

History of the Sioux War of 1862-3, by Isaac W. Heard.

Minnesota Year Book for the year 1892.

Photographs and Engravings of Minnesota Cities and Villages.

Copies of the last issued daily newspapers of St. Paul and Minneapolis.

Report of the Grand Army of the Republic for Minnesota.

American Flag, and Roster of St. Paul Camp No. 1, Sons of Veterans U. S. A.

One \$20 gold coin, one \$10 gold coin and one \$5 gold coin and one each of all of the silver, nickel and copper coins, of the United States, of this date.

Portrait of Alexander Ramsey, first Governor of the Territory of Minnesota.

Portrait of Henry Hastings Sibley, first Governor of the State of Minnesota.

A copy of the introductory address by Hon. Charles H. Graves.

A copy of the oration delivered today by Hon. Cushman D. Davis.

A copper plate of the Seal of the Territory and the Seal of the State of Minnesota.

A copper plate on which are engraved the names of the Capitol Commissioners, Secretary, Architect and Assistants.

A copper plate on which is engraved an epitome of memorable events in the history of the organization of the Territory and State of Minnesota.

City Directory for the year 1898 of St. Paul, Capital of Minnesota.

Northwestern Gazetteer and Business Directory.

A copy of the programme and ceremonies of laying the Corner Stone.

A list, engraved on parchment, of the contents of the Corner Stone.

A List of the Articles
deposited in the
Corner Stone of the New Capitol of Minn

which was laid in St Paul on the 27th day of July A.D. 1858.

Holy Bible.

Statutes of the State of Minnesota, Vols. 1 & 2.

Last published Annual Report of the Secretary of State of Minnesota.

Last published Annual Report of the Minnesota State Auditor.

Last published Annual Report of the Minnesota State Treasurer.

Legislative Manuals of Minnesota for the years 1853, 1855 & 1857.

History of Minnesota Volunteers in the War of the Rebellion, Vols. 1 & 2.

Volumes 4 and 5 of the Minnesota Historical Society Collections.

Minnesota Historical Society Publication, "How Minnesota became a State".

Congressional Directory of the 55th Congress of the United States.

History of the New Capitol legislation.

The original draft of the bill introduced in the Legislature for the erection of a New Capitol.

Hill's History of Minnesota.

History of the Sioux War of 1862-3, by Isaac W. Heard.

Minnesota Year Book for the year 1852.

Photographs and Engravings of Minnesota Cities and Villages.

Copies of the last issued daily newspapers of St Paul and Minneapolis.

Report of the Grand Army of the Republic for Minnesota.

American Flag, and Roster of St Paul Camp No. 1, Sons of Veterans U. S. A.

One \$50 gold coin, one \$10 gold coin and one \$5 gold coin and one each of all of the silver, nickel and copper coins, of the United States, of this date.

Portrait of Alexander Ramsey, first Governor of the Territory of Minnesota.

Portrait of Henry Hastings Sibley, first Governor of the State of Minnesota.

A copy of the introductory address by Hon. Charles H. Graves.

A copy of the oration delivered today by Hon. Cushman D. Davis.

A copper plate of the Seal of the Territory and the Seal of the State of Minnesota.

A copper plate on which are engraven the names of the Capitol Commissioners, Secretary, Architect and Assistants.

A copper plate on which is engraved an epitome of memorable events in the history of the organization of the Territory and State of Minnesota.

City Directory for the year 1858 of St Paul, Capital of Minnesota.

Northwestern Gazetteer and Business Directory.

A copy of the programme and ceremonies of laying the Corner Stone.

A list, engraved on parchment, of the contents of the Corner Stone.

The Northwestern
Press Clipping Bureau

101 Exchange Building, Minneapolis, Minnesota, U.S.A.

State
August 11th
H.M.M.

Not only every journalist in town has received an invitation to attend the laying of the corner stone of the new capitol at St. Paul, on July 27. The editor of this paper acknowledges the receipt of invitation and a very neat badge which reads: "Guest, laying of cornerstone capitol of Minn., July 27th, 1898." There's gladness,



Sep. 2nd 1898.





Sept 2nd 1898





September 28th 1898





MINNESOTA STATE CAPITAL - SASS GILBERT PHOTO
NE SW SOUTH EAST CORNER - SEPT. 28TH 1898

SASS GILBERT PHOTO

September 28th 1898



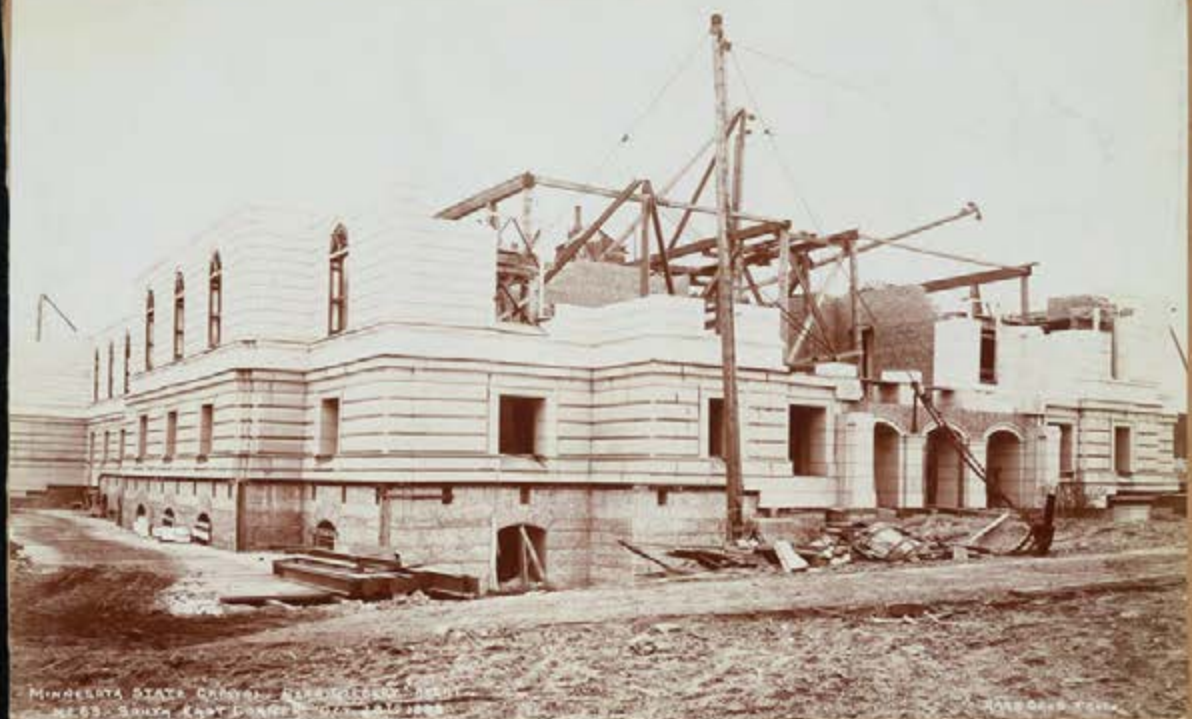
MINNESOTA STATE CAPITAL - SASS GILBERT PHOTO
NE SW SOUTH WEST CORNER - SEPT. 28TH 1898

SASS GILBERT PHOTO



October 28th 1898





MINNESOTA STATE CAPITOL, UNDER CONSTRUCTION
NOV. 23 - SOUTH EAST CORNER

1898

October 28th 1898



MINNESOTA STATE CAPITOL, UNDER CONSTRUCTION
NOV. 23 - SOUTH EAST CORNER



December 2nd 1898





December 2nd 1898





June 1st 1899



70. SOUTH WEST CORNER
MINNESOTA

HARRIS BROS. PHOTO.



11. DOME FOUNDATION PIERCE. JUNE 1, 1899.
MINNESOTA STATE CAPITOL. CARL GUSTAV ARCH.

June 1st 1899





No. 43. DOME FOUNDATION FOR CENTRAL BUILDING MINNESOTA STATE CAPITOL. ARCH. JULY 1 1899.

Илья Вло. Фото.

July 1st 1899



Илья Вло. Фото.

Илья Вло. Фото.



July 1st 1899





N577. West West Capitol. Aug. 1, 1899. HAAS BRO. PHOTO-STUDIO. HAGERSTOWN, MARYLAND.

August 1st 1899



N578. Main Entrance. West Virginia State Capitol. Aug. 1, 1899. HAAS BRO. PHOTO-STUDIO.



August 1st 1899





September 1st 1899





N^o 84. SOUTH WEST CORNER, MINNESOTA STATE CAPITAL, CASS GILBERT ARCHT. SEPT. 1, 1899. HAASBRO. PHOTO.

September 1st 1899



N^o 85 NORTH EAST CORNER, MINNESOTA STATE CAPITAL, CASS GILBERT ARCHT. SEPT. 1, 1899. HAASBRO. PHOTO.



October 1st 1899



W.B.P. SOUTH EAST CORNER. MINNESOTA STATE CAPITAL. CALL GILBERT ARCHT. OCT. 1st 1899. HAA&BRO. PHOTO.



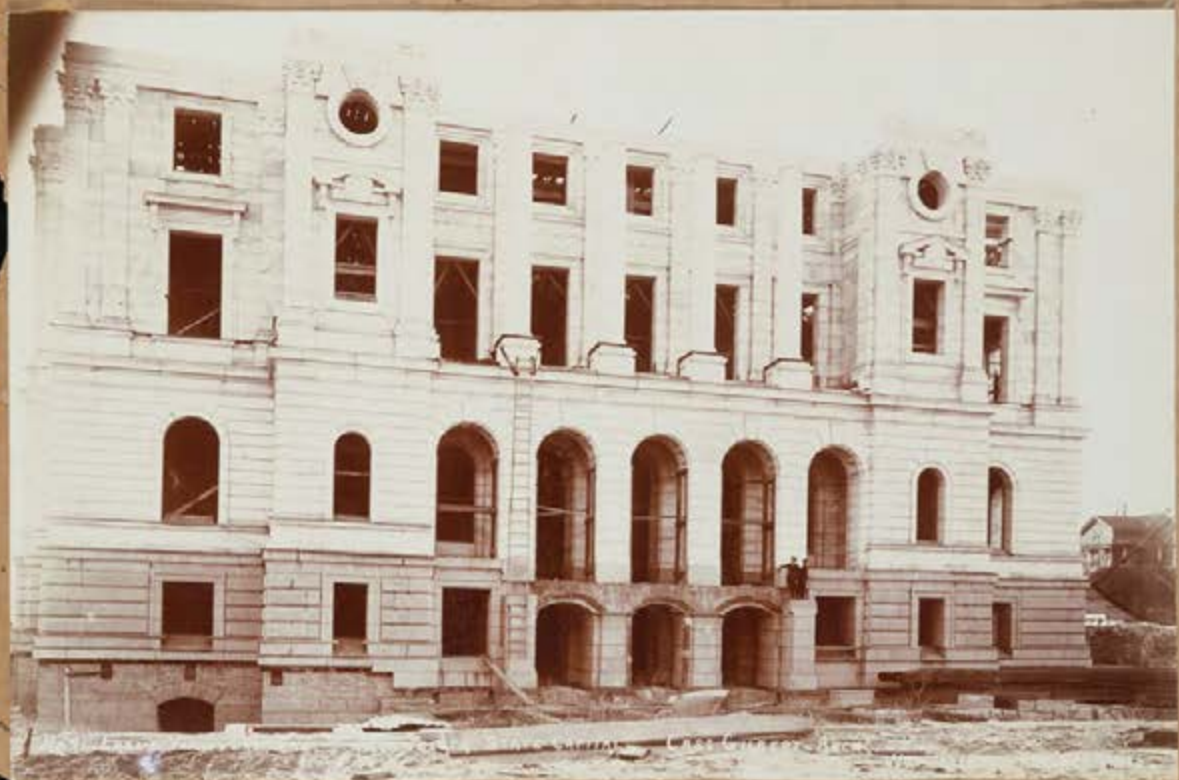
October 1st 1899





REAR VIEW, REAR WING, MINNESOTA STATE CAPITAL, CASS GILBERT, ARCHT. N.Y. PHOTO. HENNING PHOTO.

November 1st 1899

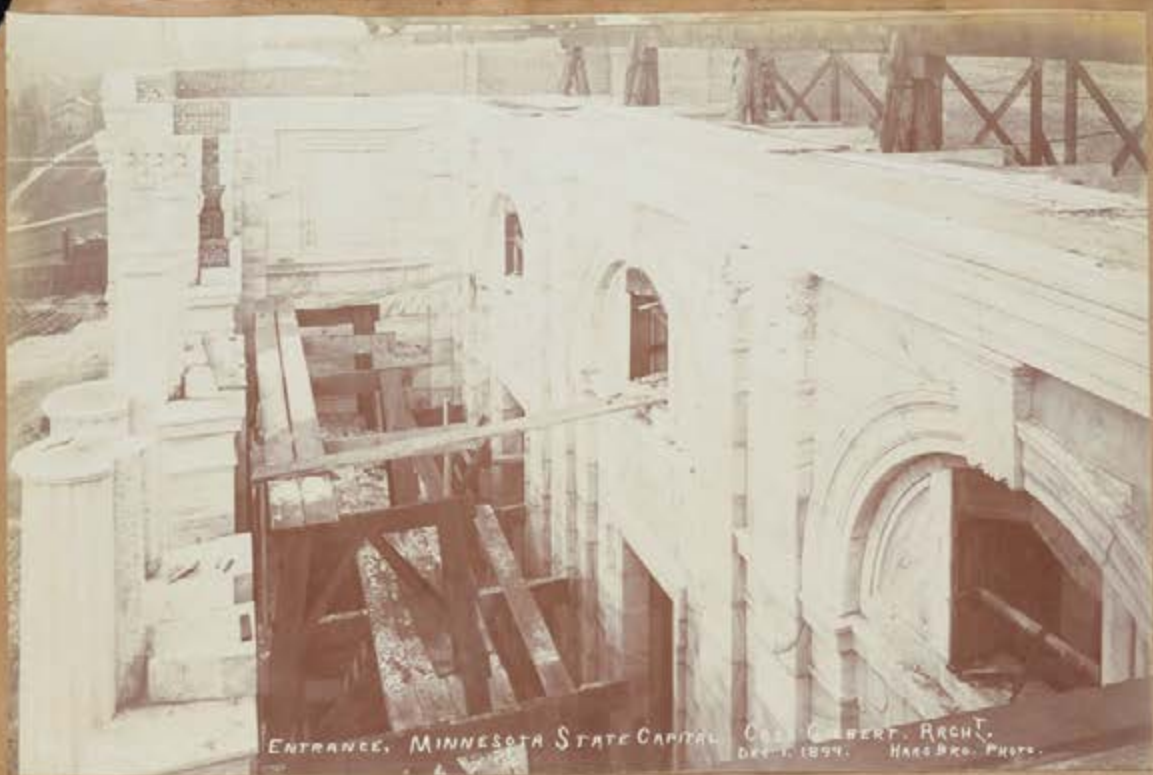




November 1st 1899



THE CENTRAL... GALE GILBERT ARCHT. Nov. 1, 1899. HARRIS PHOTO.



ENTRANCE, MINNESOTA STATE CAPITAL. CAS. GILBERT, ARCHT.
DEC. 1, 1899. HANS BROS. PHOTO.

December 1st 1899

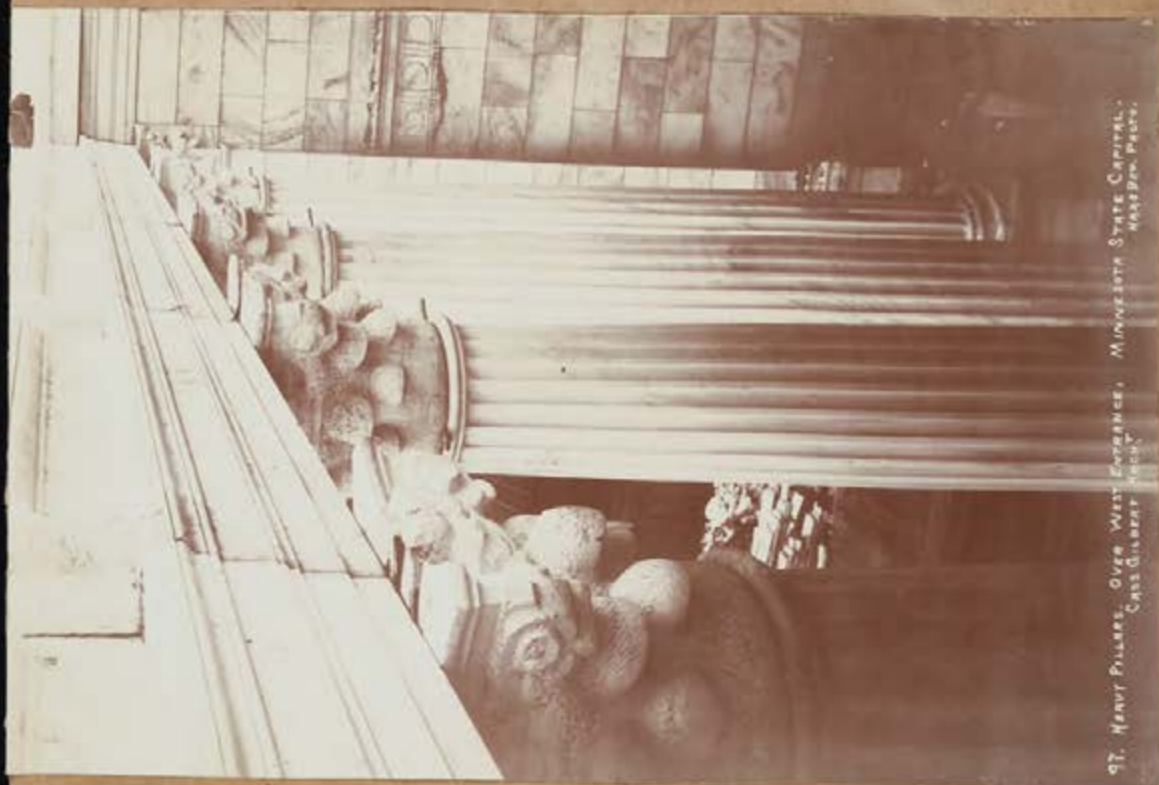


ENTRANCE, MINNESOTA STATE CAPITAL. CAS. GILBERT, ARCHT.
DEC. 1, 1899. HANS BROS. PHOTO.



16. DAYLIGHT TRUSS WORK OF THE BRIDGE OVER THE MISSISSIPPI RIVER AT ST. LOUIS, MO. PHOTO BY GILBERT RICH.

December 1st 1899

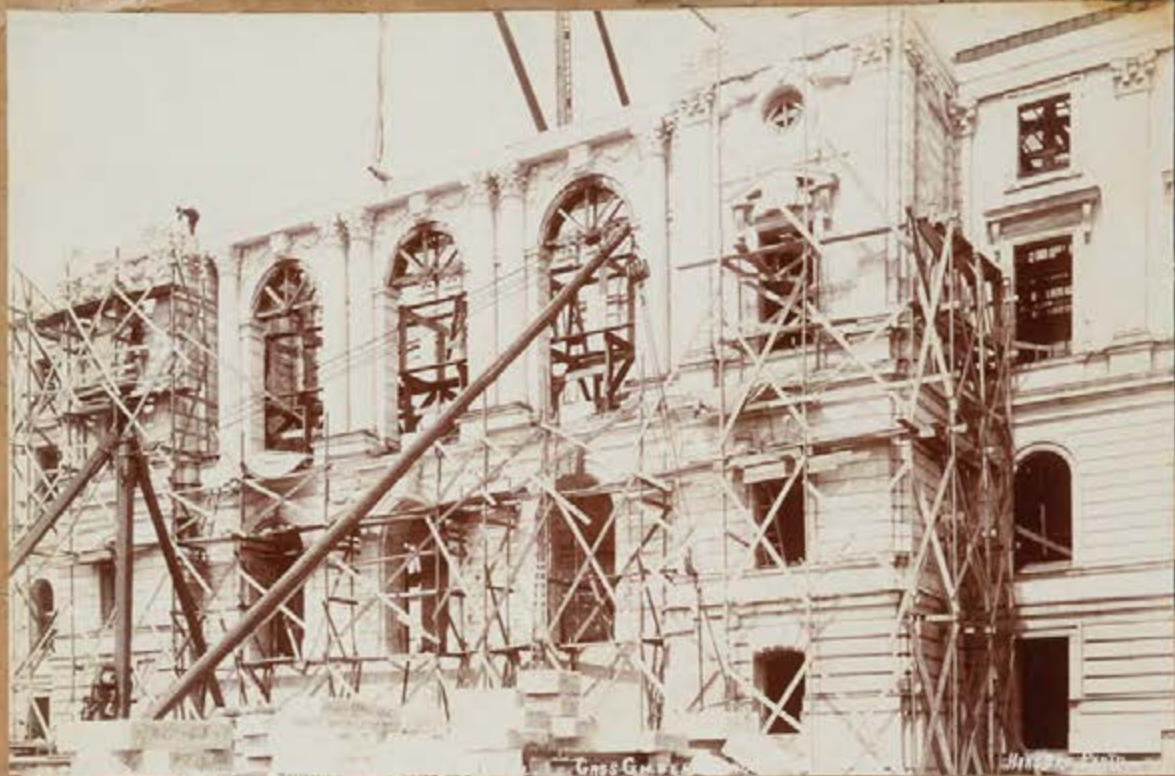


17. HEAVY PILLARS, OVER WEST ENTRANCE, MINNESOTA STATE CAPITAL, ST. PAUL, MINN. PHOTO BY GILBERT RICH.





PLASTER MODEL MINNESOTA STATE CAPITAL
CASE GILBERT ARCHT.



May. 1st 1900



17. W

ENTRANCE

MINNESOTA S

CAPITAL

GILBERT

MAY 1, 1900

1888 B



Ниль-Виль-Рейд

May 1st 1900





18106. MINNESOTA STATE CAPITAL. CASE GILBERT ARCH. JUNE 1. 1900.

REYNOLDS PHOTO.

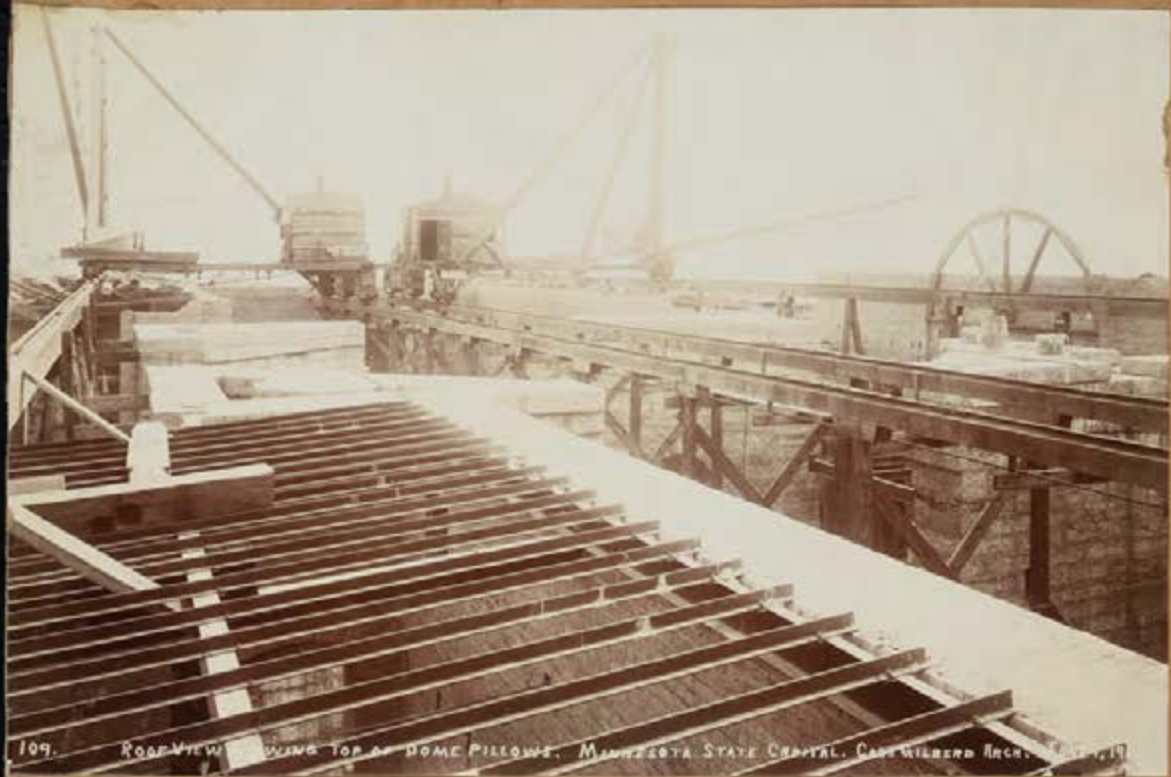


REYNOLDS PHOTO.



June 1st 1900





109. ROOF VIEW, SHOWING TOP OF DOME PILLARS, MINNESOTA STATE CAPITOL, CASE WILBERG ARCH. 1900

June 1st 1900





July 1st 1900



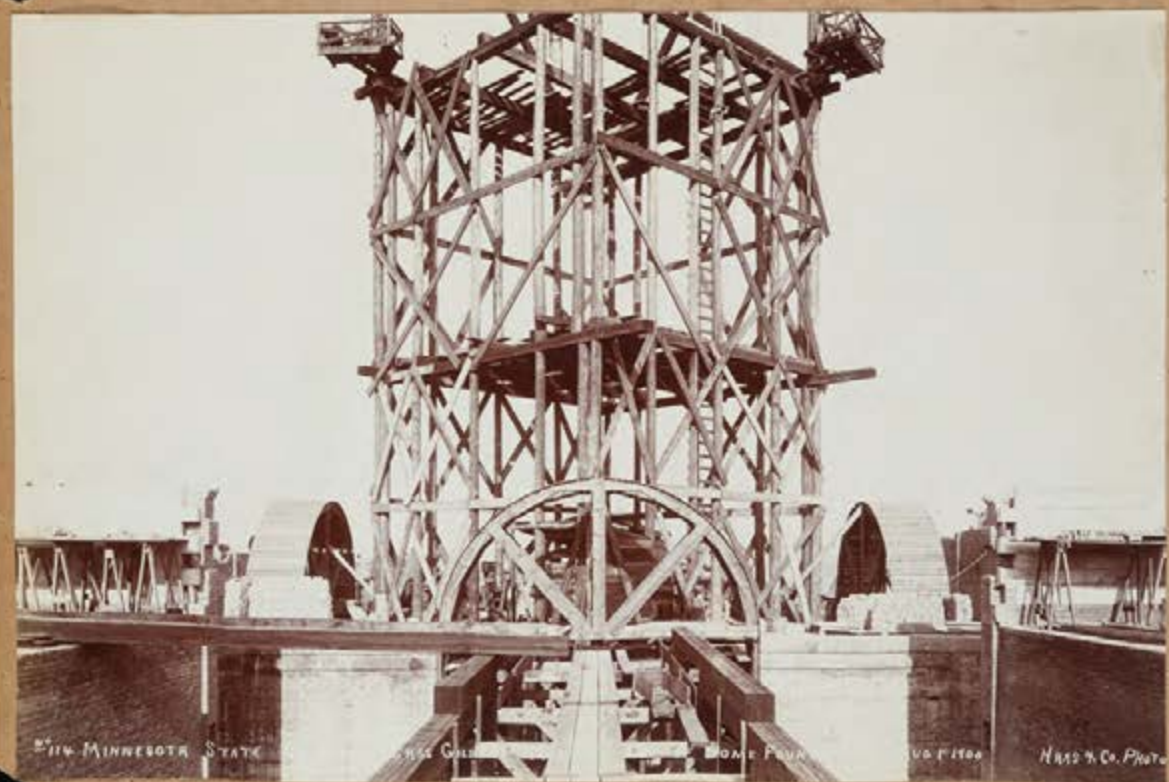


July 1st 1900





August 1st 1900.





NO. 115 MINNESOTA STATE CAPITAL

1900 HARRIS CO. PHOTO.

August 1st 1900



NO. 116. MINNESOTA STATE CAPITAL. CHAS GILBERT ARCHT. REAR VIEW. AUG. 1, 1900. HARRIS CO. PHOTO.



September 1st 1900





MINNESOTA STATE CAPITOL DOME - HOUSE ARCHITECTS & THE DOME -
 Sept. 1900. HARRIS & PIERCE

September 1st 1900



MINN. WISCONSIN STATE CAPITOL. CASE GILBERT ARCHT.
 NOT SHOWN OVER MAIN ENTRANCE. SEPT. 1900. HARRIS & PIERCE



NO. 122 MINNESOTA

HAAS & CO. PHOTO

October 1st 1900



NO. 122 MINNESOTA STATE CAPITAL. CHAS. GILBERT

HEAVY EQUIPMENT

UNDER DOMESTIC

OCT. 1, 1900. HAAS & CO. PHOTO



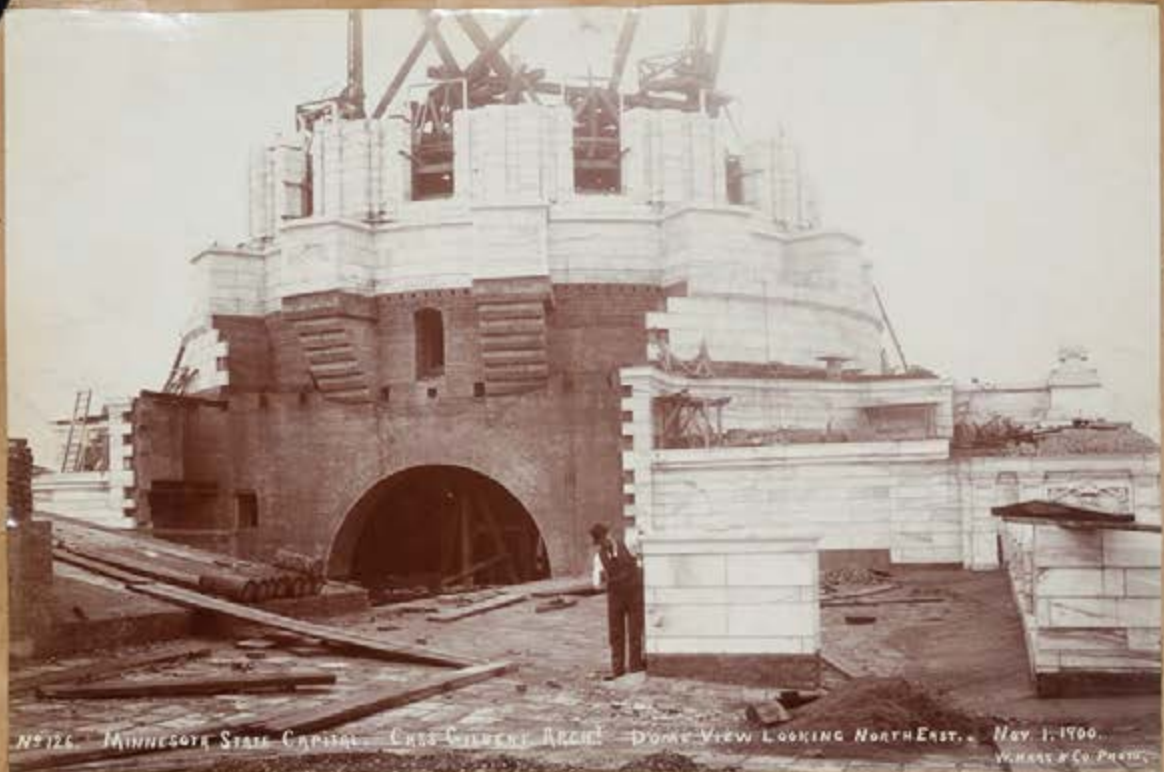
NO 124 MINNESOTA STATE CAPITAL. CASS GILBERT ARCHT. MAIN VIEW OF BUILDING. OCT. 1, 1900.

October 1st 1900



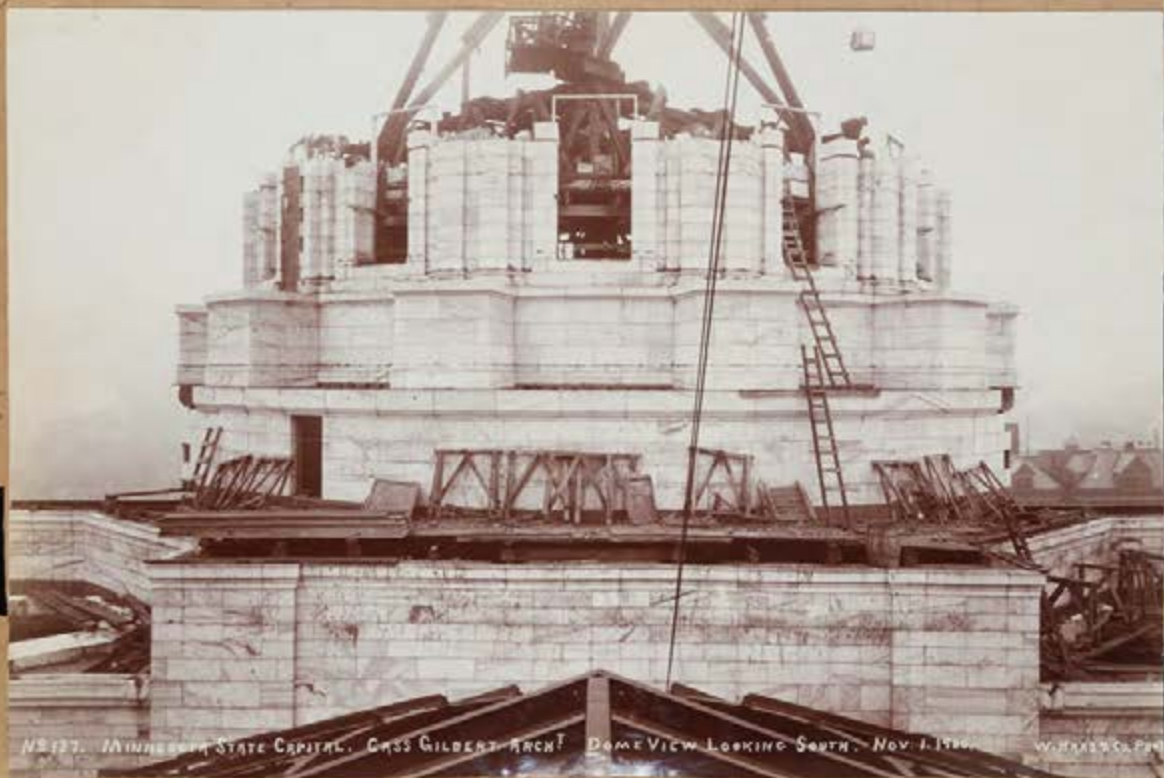
NO 125. MINNESOTA STATE CAPITAL. CASS GILBERT ARCHT. CARVED PANEL. OCT. 1, 1900.

HARRIS & Co. PHOTO.



NO 126. MINNESOTA STATE CAPITAL. CASS GILBERT ARCHT. DOME VIEW LOOKING NORTH EAST. NOV. 1. 1900. W. H. HALL & CO. PHOTO.

November 1st 1900



NO 127. MINNESOTA STATE CAPITAL. CASS GILBERT ARCHT. DOME VIEW LOOKING SOUTH. NOV. 1. 1900. W. H. HALL & CO. PHOTO.



No 128. MINNESOTA STATE CAPITAL. CASE GILBERT ARCHT. DOME STAIRWAY. NOV. 1, 1900.

W. HARRIS & Co. Photo.

November 1st 1900



No 129. MINNESOTA STATE CAPITAL. CASE GILBERT ARCHT. GENERAL VIEW LOOKING NORTH EAST.

1900.

W. HARRIS & Co. Photo.



NO. 130. MINNESOTA STATE CAPITAL. CASS GILBERT ARCHT. FRONT VIEW. JAN. 17, 1901.

W. HARRIS & CO. PHOTO.

May 1st 1901



MINNESOTA STATE CAPITAL. CASS GILBERT ARCHT. FRONT VIEW. MAY 1, 1901.



NO. 133. MINNESOTA STATE CAPITAL, CASS GILBERT, ARCHT.



NO. 134. MINNESOTA STATE CAPITAL, CASS GILBERT, ARCHT. APRIL 17, 1901.



MINNESOTA STATE CAPITAL, CASS GILBERT, ARCHT. APRIL 17, 1901.



No 135

MINNESOTA STATE CAPITOL. CASS GILBERT ARCHT. MAY. 2ND 1901.

W. H. & C. CO.
PHOTO.

135-139-138 - 7-11-11





No 190. MINNESOTA STATE CAPITOL, NORTH EAST CORNER. GASS GILBERT ARCHT. JUNE 1st 1901. W. H. HARRIS & CO. PHOTO.

June 1st 1901





NO 146. MINNESOTA STATE CAPITOL. DOME WALL. CASS GILBERT ARCHT. JUNE 1 1901. W. HASE & CO. PHOTO.



NO 145. MINNESOTA STATE CAPITOL. ROOF & DOME. CASS GILBERT ARCHT. JUNE 1 1901. W. HASE & CO. PHOTO.



DANIEL CHESTER FRENCH, SCULPTOR
1915, MINNESOTA STATE CAPITOL, ST. PAUL, MINN.



DANIEL CHESTER FRENCH, SCULPTOR
1915, MINNESOTA STATE CAPITOL, ST. PAUL, MINN. JUNE 25, 1901, WILLIAM L. MOORE



NO. 147. MINNESOTA STATE CAPITOL, CASS GILBERT, ARCHT. JUNE 28, 1901.
DANIEL CHESTER FRENCH, SCULPTOR. W. HAAS, PHOTO.



NO. 148. MINNESOTA STATE CAPITOL, CASS GILBERT, ARCHT. JUNE 28, 1901.
DANIEL CHESTER FRENCH, SCULPTOR. W. HAAS, PHOTO.



NR 148. MINNESOTA STATE CAPITOL. CASS GILBERT, ARCHT. JULY 5TH 1901.
DANIEL CHESTER FRENCH, SCULPTOR.

W. H. HARRIS
PHOTO



NR 149. MINNESOTA STATE CAPITOL. CASS GILBERT, ARCHT. JULY 6TH 1901.
DANIEL CHESTER FRENCH, SCULPTOR.

W. H. HARRIS
PHOTO



NR 151. MINNESOTA STATE CAPITAL, CASS GILBERT, ARCHT. JULY 12, 1901.
DANIEL CHESTER FRENCH, SCULPTOR.

W. HARRIS



NR 150. MINNESOTA STATE CAPITAL, CASS GILBERT, ARCHT. JULY 12, 1901.
DANIEL CHESTER FRENCH, SCULPTOR.

W. HARRIS
PHOTO.



NO. 152. MINNESOTA STATE CAPITAL. CASS GILBERT, ARCHT. JULY 9, 1901. W. HARRIS
DANIELTOWN, ILL. SCULPTOR.



NO. 153. MINNESOTA STATE CAPITAL. CASS GILBERT, ARCHT. JULY 12, 1901. W. HARRIS
DANIELTOWN, ILL. SCULPTOR.



LIBERTY, UNIVERSITY OF CALIFORNIA, LOS ANGELES, CALIF. JULY 13, 1901.
DANIEL C. GARDNER, CORNHILL, BOSTON, MASS.



Sept 16, 1901





NO 157. MINNESOTA STATE CAPITOL. CASS GILBERT ARCHT. FRONT VIEW, SEPT 16, 1901.



NO 158. MINNESOTA STATE CAPITOL. CASS GILBERT ARCHT. ROOF WORK, OVER HOUSE CHAMBER, SEPT. 16, 1901



1210. MINNESOTA STATE CAPITOL. CASS GILBERT, ARCHT. SEPT. 20, 1901.
IRON WORK, BY

September



1211. MINNESOTA STATE CAPITOL. CASS GILBERT, ARCHT. SEPT. 20, 1901.
RICH EYERMAN



161. MINNESOTA STATE CAPITOL. CASS GILBERT, ARCH. OCT. 19, 1901.

Oct. 19, 1901



162. MINNESOTA STATE CAPITOL. CASS GILBERT, ARCH. OCT. 19, 1901.



MINNESOTA STATE CAPITOL. POWER HOUSE. CASE GILBERT ARCHT. RETAINING WALL AND EXCAVATION.
MARCH 26, 1902. HARRIS AND WRIGHT PHOTO.



NO 164. MINNESOTA STATE CAPITOL. POWER HOUSE. CASE GILBERT ARCHT. RETAINING WALL AND EXCAVATION
MARCH 26, 1902. HARRIS AND WRIGHT PHOTO.



NO 166. MINNESOTA STATE CAPITOL. CASS GILBERT ARCHT. APRIL 27. 1902.

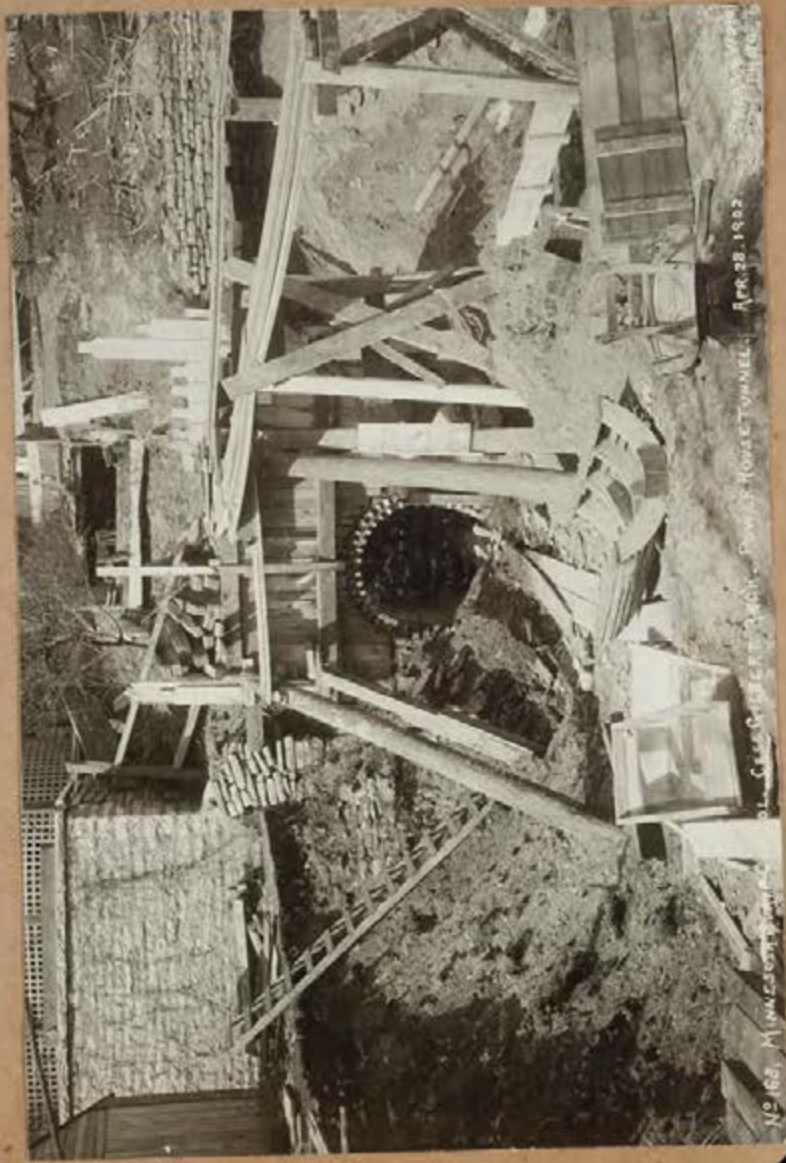
HARVEY WRIGHT
PHOTOGRAPHER



NO 165. MINNESOTA STATE CAPITOL. CASS GILBERT ARCHT. APR. 4. 1902.



STATUE OF THE MOTHER OF GOD, BILGOLIN ST. REC'D. APRIL 27, 1902. HERR & WONG, PHOTOG.



No. 162. MINNEAPOLIS, MINN. C. C. GARDNER & CO. PHOTOGRAPHERS. APR. 28, 1902.



No 159 MINNESOTA STATE CAPITAL, WEST GILBERT AVE., LOWER TOWER, APRIL 28th 1902. HASS & WEIGHT PHOTO



No 120 MINNESOTA STATE CAPITAL, WEST GILBERT AVE., NORTH EAST CORNER, APRIL 28th 1902. HASS & WEIGHT PHOTO





MICHIGAN STATE CAPITAL - FRONT FOUNDATION STONE - APRIL 28th 1902

KARE W. WILSON
PHOTO



MICHIGAN STATE CAPITAL - FRONT VIEW - CASS GILBERT ARCHT - MAY 25 1902

KARE W. WILSON
PHOTO





MAY 29 1902.
 MINNEAPOLIS
 CASS GILBEY ARCHT. HARRY WRIGHT PHOTO



178 MINNESOTA STATE CAPITAL POWER HOUSE FOUNDATION
 CASS GILBEY ARCHT. MAY 29 1902. HARRY WRIGHT PHOTO



NO 181. JUNE 19, 1902. CRACKED WALL.

MAAS & WRIGHT. PHO

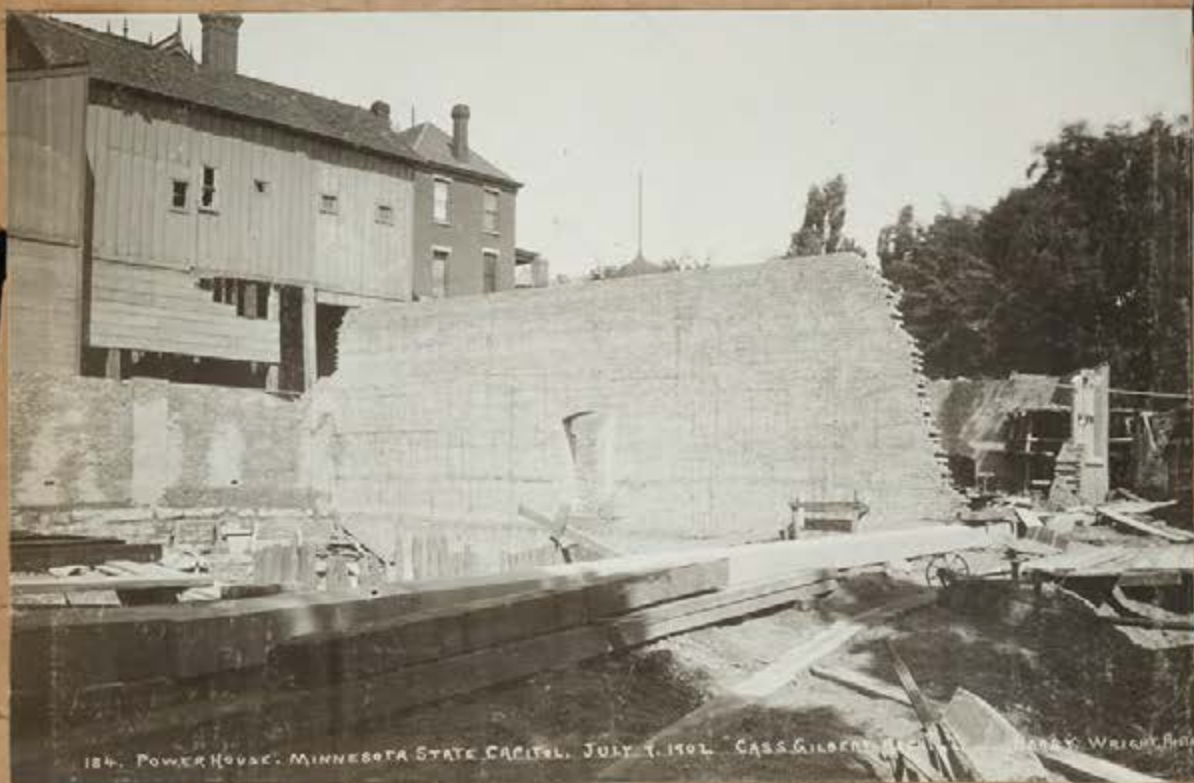


NO 181. JUNE 19, 1902. CRACKED WALL.

MAAS & WRIGHT. PHO



183. MINNESOTA CAPITOL. JULY 7, 1901. CASS GILBERT

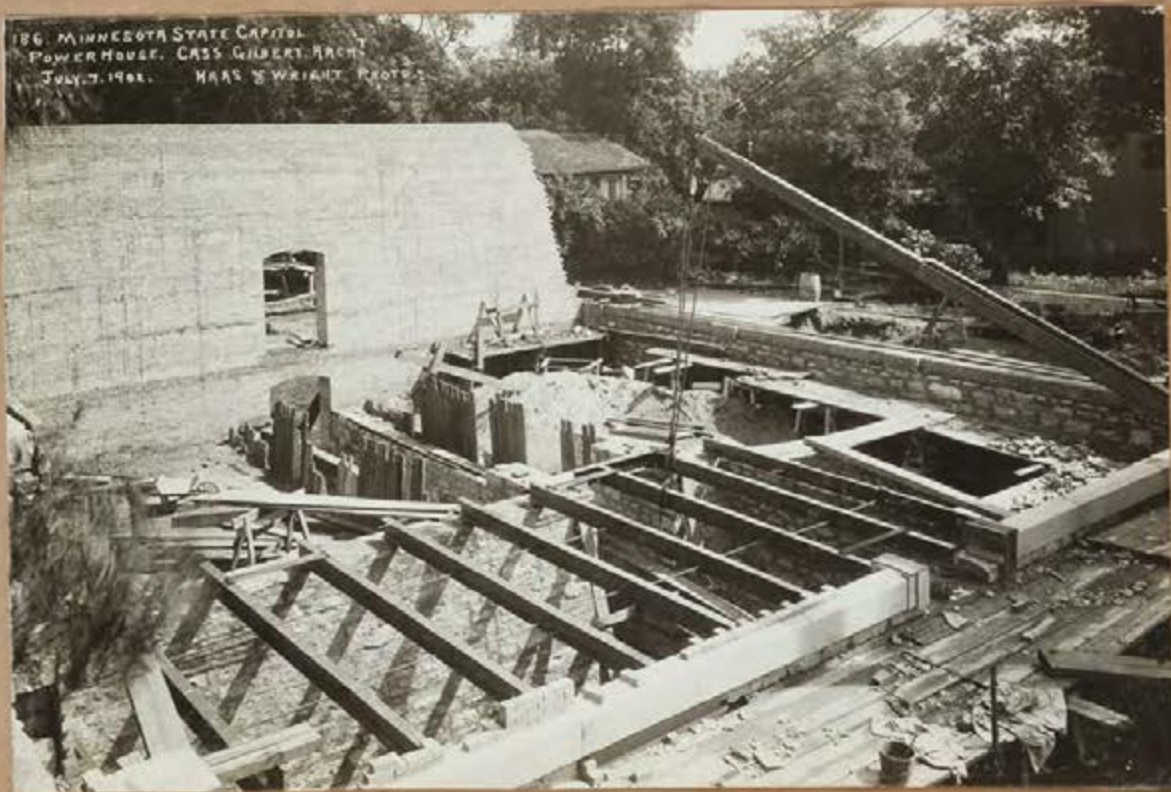


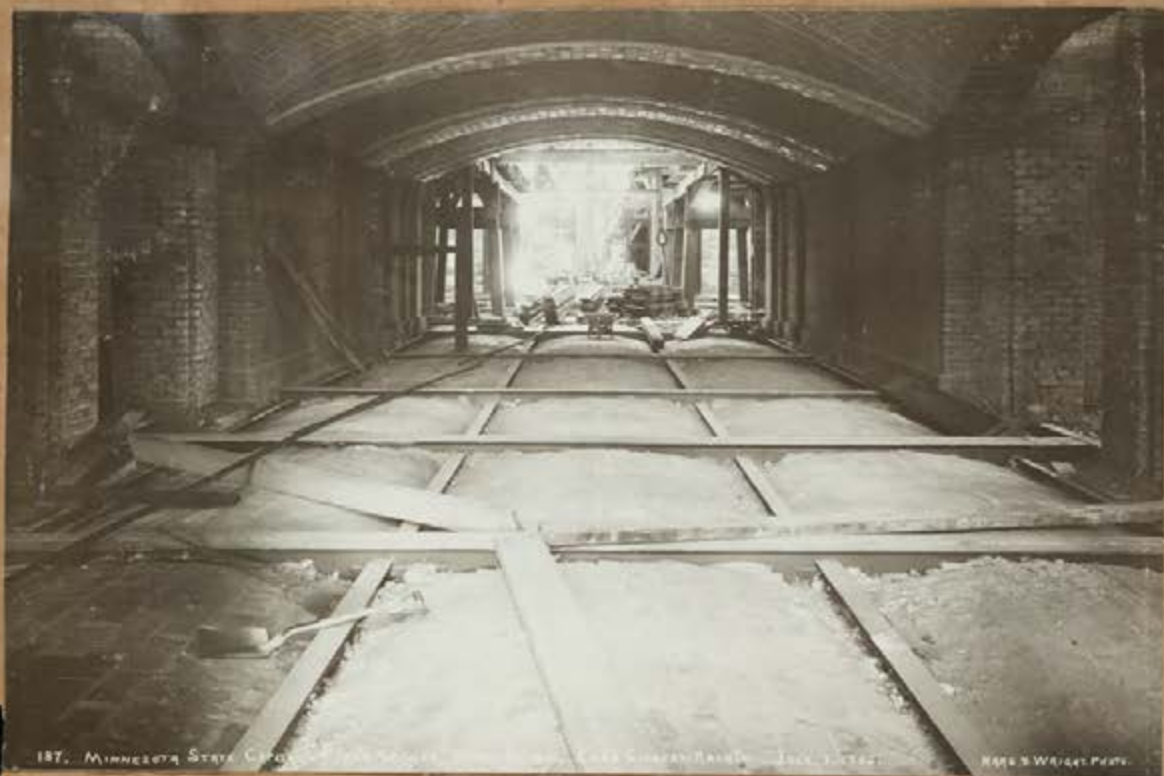
184. POWER HOUSE. MINNESOTA STATE CAPITOL. JULY 7, 1901. CASS GILBERT

185. POWER HOUSE.
MINNESOTA STATE CAPITAL
CASS GILBERT, ARCHT. JULY 7, 1902.
HAAS & WRIGHT, PHOTO.



186. MINNESOTA STATE CAPITAL
POWER HOUSE. CASS GILBERT, ARCHT.
JULY 7, 1902. HAAS & WRIGHT, PHOTO.





187. MINNESOTA STATE CAPITOL

CONSTRUCTION

JULY 7, 1902

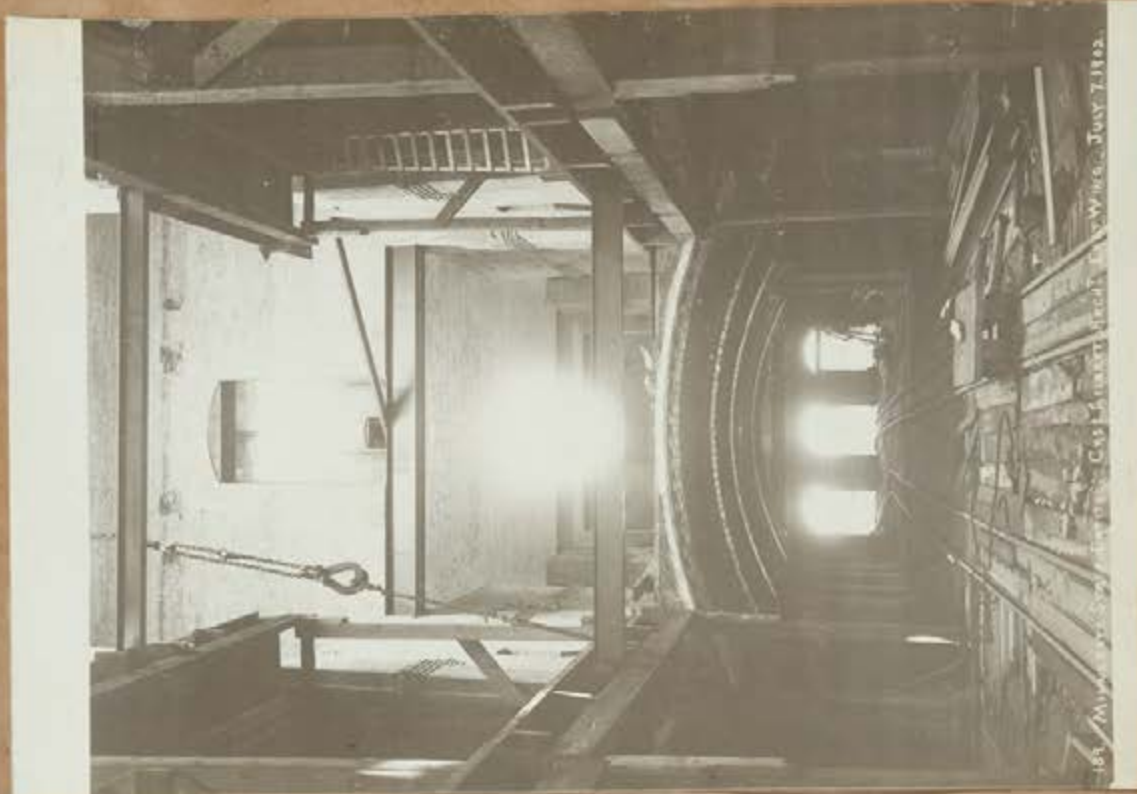
HALL & WEIGHT PHOTO



188. MINNESOTA STATE CAPITOL MAIN STAIRWAY CONSTRUCTION

CLAS GILBERT ARCHT JULY 7, 1902

HALL & WEIGHT PHOTO



187. Myrtle Beach, S. C. - Capt. Gilbert, U. S. Army - July 7, 1912.



190. MISSISSIPPI STATE CAPITOL, STATE OF MISSISSIPPI - CAPT. GILBERT, U. S. ARMY - JULY 7, 1912.

HEARST-WRIGHT, PHOT.



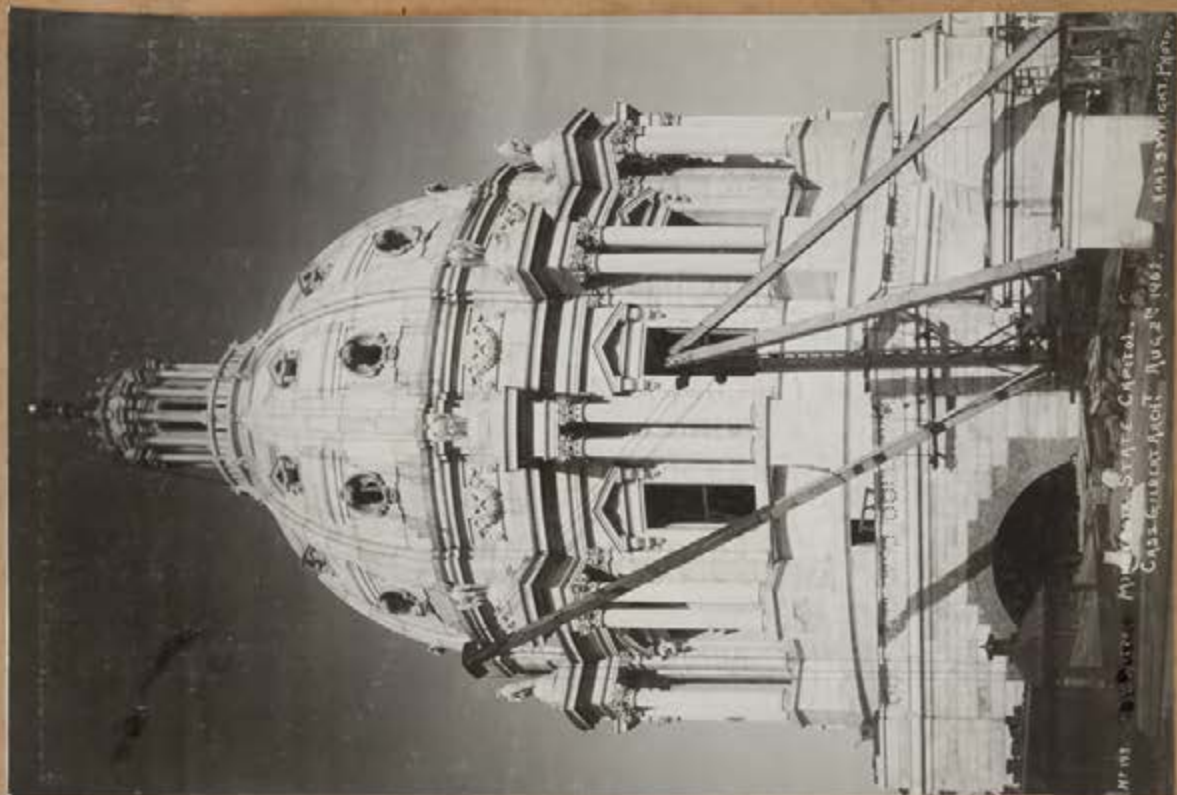
NO 191. CEILING CONSTRUCTION IN CELLAR
MINNESOTA STATE CAPITAL. CASS GILBERT ARCHT. AUG. 20 1902
HANS WRIGHT PHOT.



NO 192

MINNESOTA STATE CAPITOL. GRAND STAIR-WAY
CASS GILBERT ARCHT.

AUG. 2 1902
PHOTO HANS WRIGHT



11-111. D. D. PETER. MINN. STATE CAPITOL. CASS GILBERT ARCHT. AUG 28 1902. HARRIS WRIGHT PHOTO.



11-194. REAR VIEW. MINN. STATE CAPITOL. CASS GILBERT ARCHT. AUG 28 1902. HARRIS WRIGHT PHOTO.

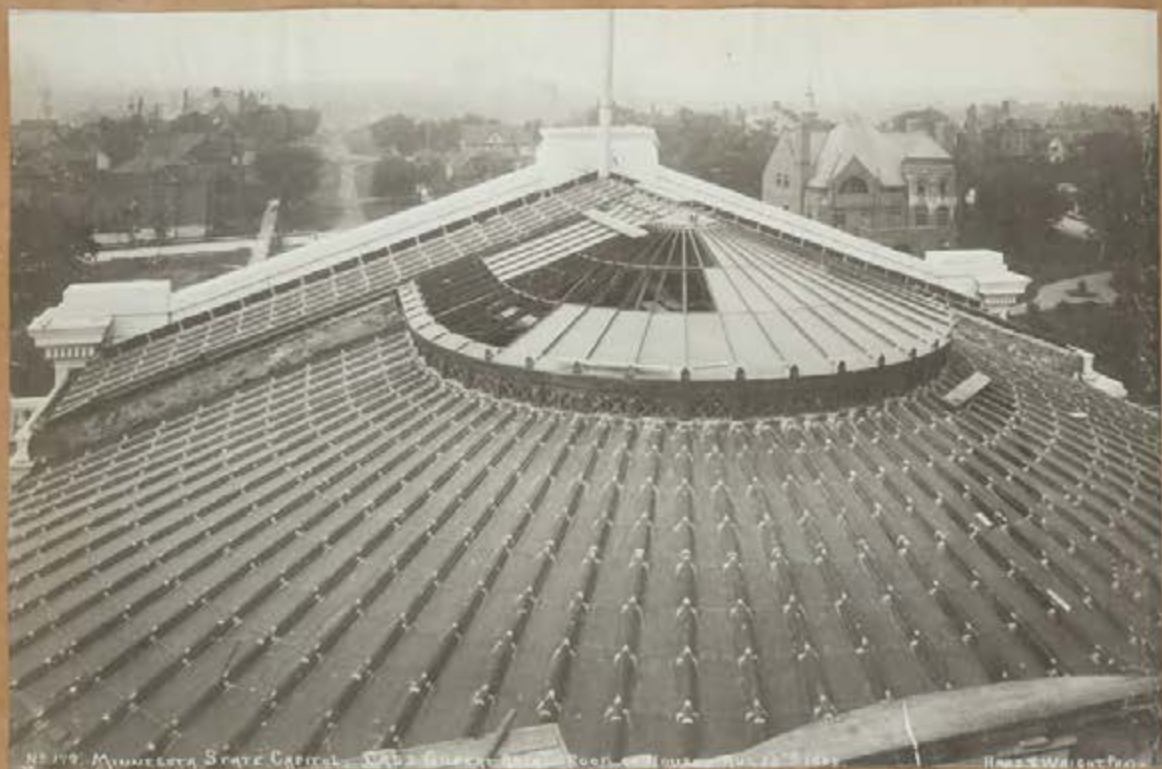




115 197. MINNESOTA STATE CAPITOL. MAIN APPROACH. COURTESY ARCHT. AUG. 28, 1908. HANS Z. WRIGHT



115 198. MINNESOTA STATE CAPITOL. MAIN APPROACH. COURTESY ARCHT. AUG. 28, 1908. HANS Z. WRIGHT



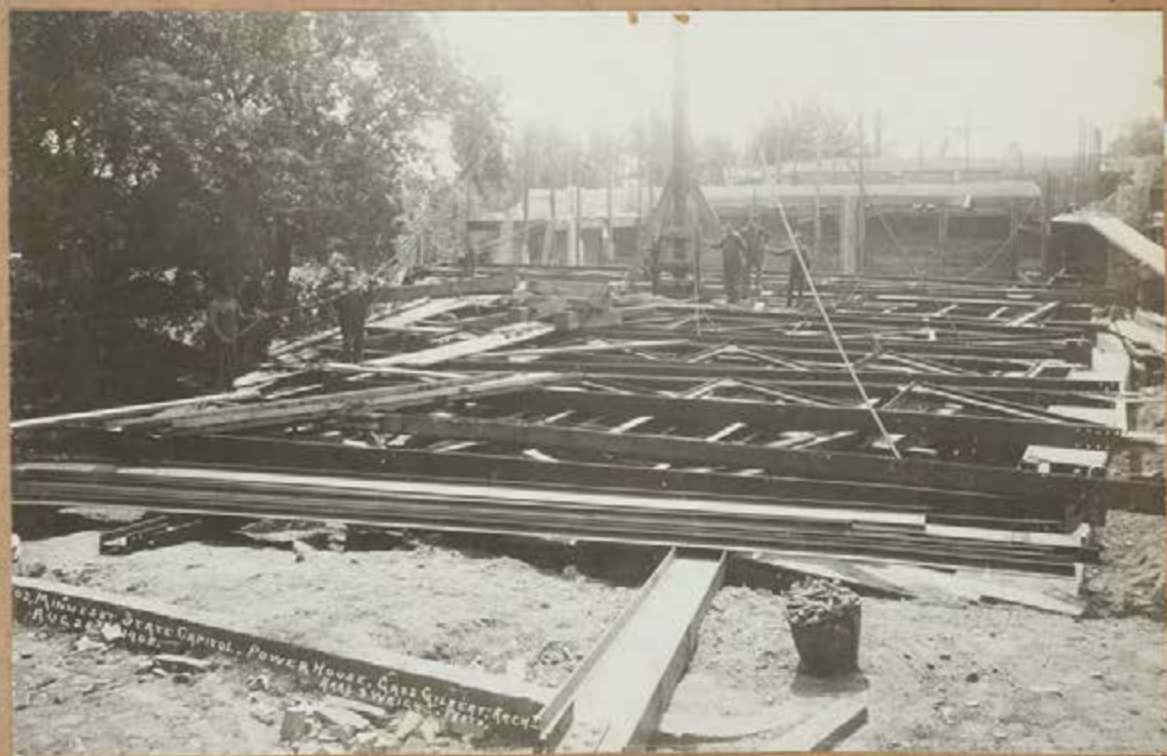
NO. 179. MINNESOTA STATE CAPITAL. DALL & GIBNEY ARCHT. ROOF. CONSTRUCTION. AUG. 22. 1892. HARRIS & WILSON PHOTO



NO. 200. MINNESOTA STATE CAPITAL. EAST WING. CONSTRUCTION. DEC. 22. 1892. DALL & GIBNEY ARCHT. HARRIS & WILSON PHOTO



NO. 201. MINNESOTA STATE CAPITOL. POWER HOUSE. CASE GILBERT ARCHT. AUG. 28, 1902. HARRIS WRIGHT PHOTO.



NO. MINNESOTA STATE CAPITOL. POWER HOUSE. CASE GILBERT ARCHT. AUG. 28, 1902. HARRIS WRIGHT PHOTO.



Nº 205. EAST ENTRANCE, MN. MINNESOTA CAPITOL. CASE GILBERT ARCHT. SEPT. 30, 1902.



Nº 206. WEST END ENTRANCE, MINN. CAP. STATE CAPITOL. CASE GILBERT ARCHT. SEPT. 30, 1902.



NR 205. MAIN ENTRANCE. MINNESOTA STATE CAPITAL. CASS GILBERT ARCHT. SEPT. 30, 1902.



NR 206. MINNESOTA STATE CAPITAL. SOUTH EAST VIEW. CASS GILBERT ARCHT. SEPT. 30, 1902.



Nº 201. POWER HOUSE. FRONT VIEW. MINNESOTA STATE CAPITAL, CASE GILBERT ARCHT. SEPT. 10, 1904.



Nº 202. POWER HOUSE. REAR VIEW. MINNESOTA STATE CAPITAL, CASE GILBERT ARCHT. SEPT. 10, 1904.

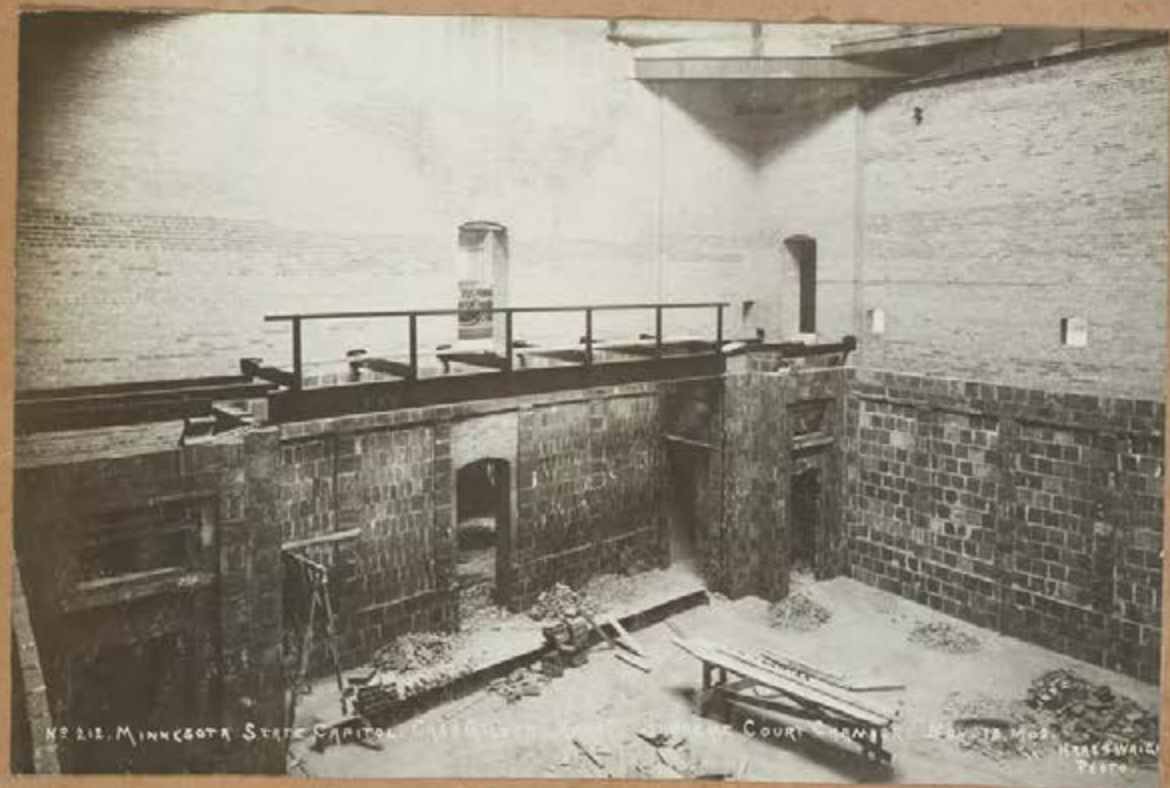


10209. MINNESOTA STATE CAPITAL. CHAS GILBERT ARCHT. POWER HOUSE. NORTH VIEW. NOV. 18, 1902. HANS SWRIGHT PHOTO



10210. MINNESOTA STATE CAPITAL. CHAS GILBERT ARCHT. POWER HOUSE. SOUTH VIEW. NOV. 18, 1902. HANS SWRIGHT PHOTO

NO. 211. MINNESOTA STATE CAPITAL, CASS GILBERT, FRONT VIEW IN HOBBE. NOV. 12, 1902. HARRIS-WRIGHT PHOTO.



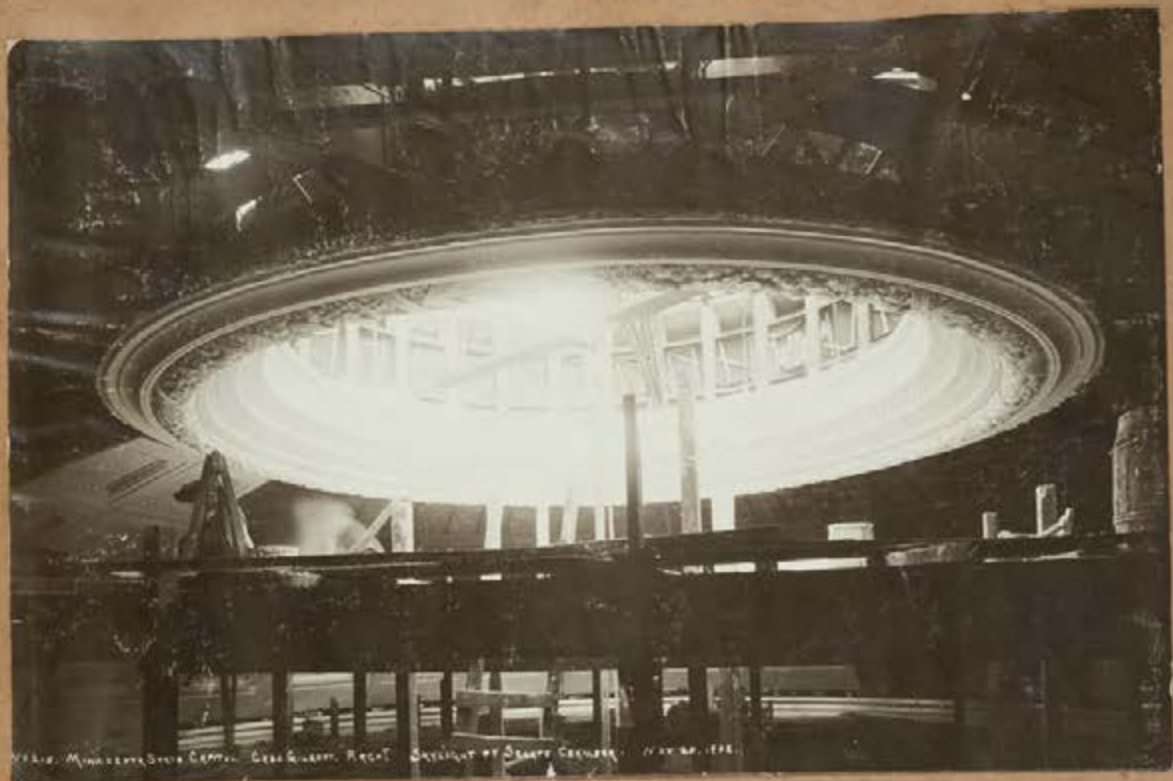
NO. 212. MINNESOTA STATE CAPITAL, CASS GILBERT, INTERIOR VIEW OF COURT ROOM. NOV. 12, 1902. HARRIS-WRIGHT PHOTO.



1925 MINNESOTA STATE CAPITOL - GILBERT AREA - FRAMESWORK, INTERIOR OF DOME - MAY 25, 1925. - HISS & WELSH, PHOTO.



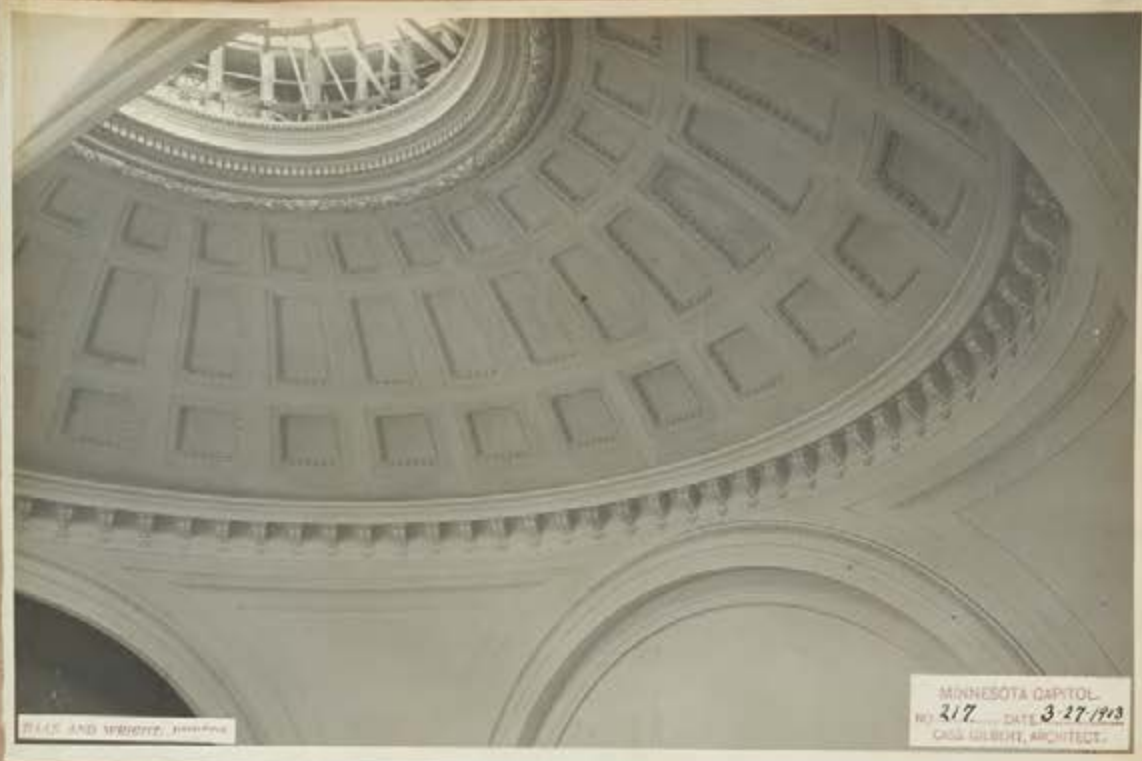
1925 MINNESOTA STATE CAPITOL - GILBERT AREA - CORRIDOR - MAY 25, 1925. - HISS & WELSH, PHOTO.



MUNICIPAL BUILDING, CHICAGO. DESIGNED BY DANIEL C. BURNHAM. 1889-91.



UNDERGROUND PASSAGE, CHICAGO. DESIGNED BY DANIEL C. BURNHAM. 1889-91.



BAAS AND WRIGHT, PHOTOS

MINNESOTA CAPITOL
NO. 217 DATE 3-27-1913
CASS GILBERT, ARCHITECT.



BAAS AND WRIGHT, PHOTOS

MINNESOTA CAPITOL
NO. 218 DATE 3-27-1913
CASS GILBERT, ARCHITECT.



MINNESOTA CAPITOL
NO. 219 DATE 3-27-1913
CASS GILBERT, ARCHITECT.

BAAS AND WRIGHT, PHOTOGR.



MINNESOTA CAPITOL
NO. 220 DATE 3-27-1913
CASS GILBERT, ARCHITECT.

BAAS AND WRIGHT, PHOTOGR.



MINNESOTA CAPITOL
NO. 221 DATE 3-27-1913
C/O. GILBERT ARCHTCT.

RALE AND WRIGHT, PHOTOS.



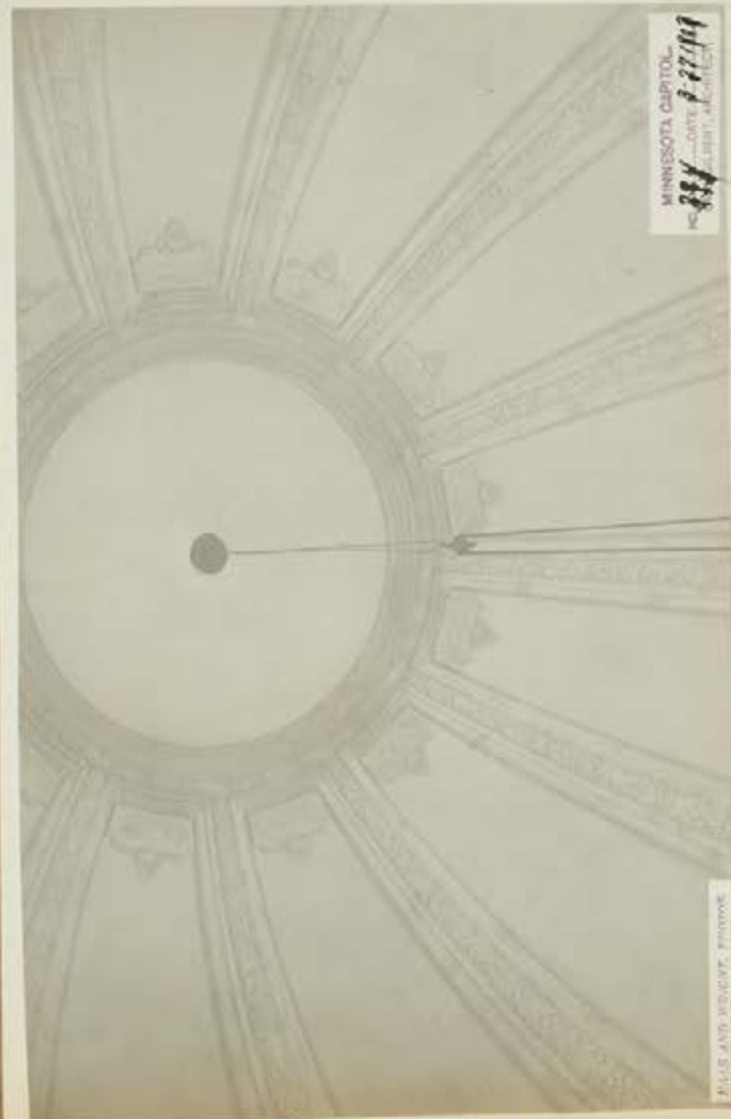
RALE AND WRIGHT, PHOTOS.

MINNESOTA CAPITOL
NO. 222 DATE 3-27-1913
C/O. GILBERT ARCHTCT.



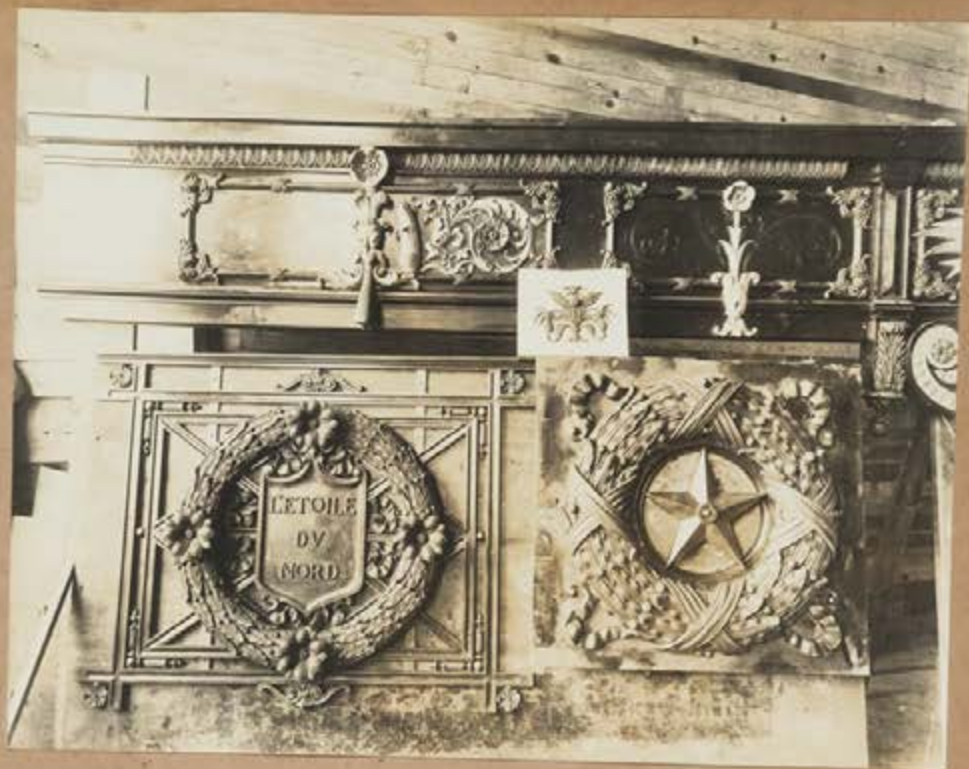
HALL AND WRIGHT, MINN.

MINNESOTA CAPITOL,
NO. 223 DATE 3-27-1919
GEO. GILBERT, ARCHTCT.



MINNESOTA CAPITOL,
NO. 223 DATE 3-27-1919
GEO. GILBERT, ARCHTCT.

HALL AND WRIGHT, MINN.







MINNESOTA STATE CAPITOL
No. 225 - Date June 29, 1918
CASS GILBERT, ARCHT.



MINNESOTA STATE CAPITOL
No. 226 - Date June 29, 1918
CASS GILBERT, ARCHT.

W. D. WOODS, PHOTOS.



MINNESOTA STATE CAPITOL
No. 217 Date June 29, 03
CASS GILBERT, ARCHT.

HARR AND WRIGHT, PHOTOS



MINNESOTA STATE CAPITOL
No. 219 Date June 29, 03
CASS GILBERT, ARCHT.

HARR AND WRIGHT, PHOTOS



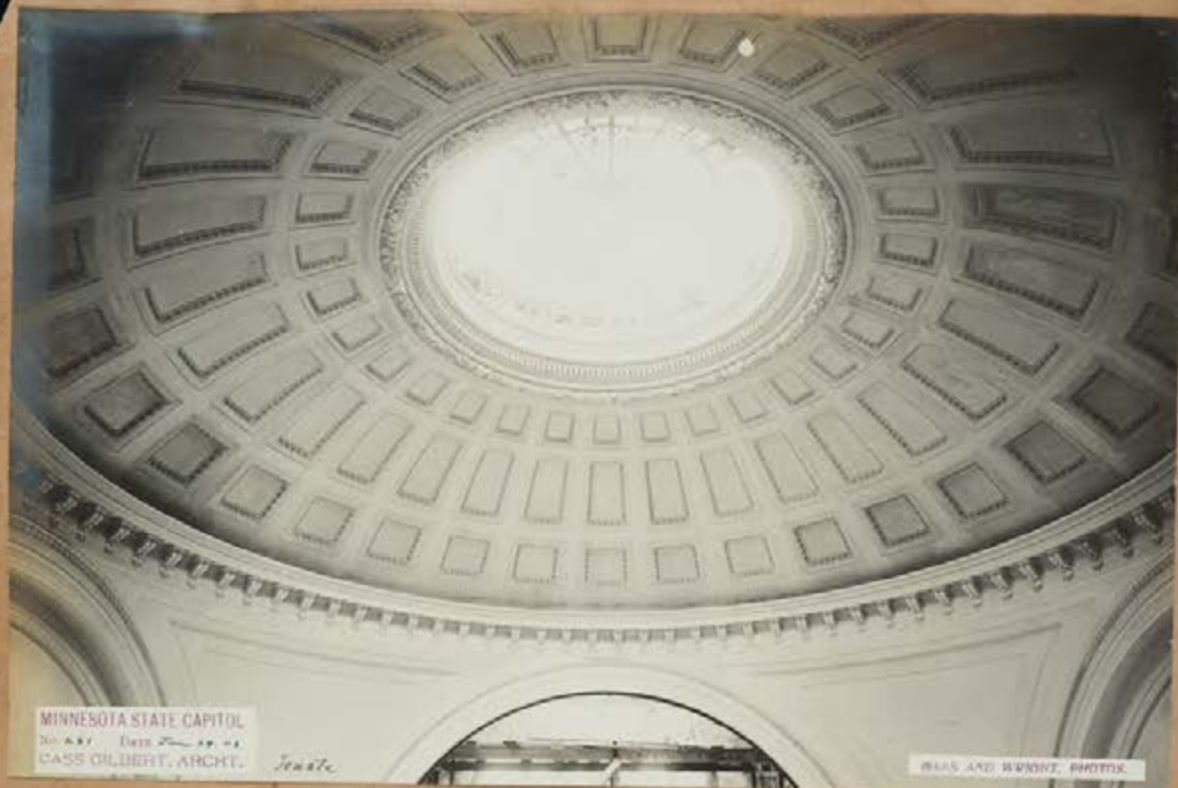
MINNESOTA STATE CAPITOL
 227 Date June 29 03

BEAN AND WOODRUFF, PHOTOS



MINNESOTA STATE CAPITOL
 228 Date June 29 03
 CARRS GALLERY ARCHES

BEAN AND WOODRUFF, PHOTOS



MINNESOTA STATE CAPITOL
No. 487. Date June 19, 1911.
CASS GILBERT, ARCHT.

Senate

WLAS AND WYBENT, PHOTOS.



MINNESOTA STATE CAPITOL
No. 293. Date June 19, 1911.
CASS GILBERT, ARCHT.

Sublime Court

WLAS AND WYBENT, PHOTOS.



UNIVERSITY OF VIRGINIA

UNIVERSITY STATE PAPERS
233 Date Nov. 19 1923
BY GILBERT L. BERRY



UNIVERSITY OF VIRGINIA

UNIVERSITY STATE PAPERS
234 Date Nov 19 1923
BY GILBERT L. BERRY



MINNESOTA STATE CAPITOL
 232 Open Nov. 19, 1902
 ASH, LILBERT, & COMPANY

MADE FOR WHEATON, ILLINOIS



MINNESOTA STATE CAPITOL
 234 Open Nov. 19, 1902
 ASH, LILBERT, & COMPANY

JENAS AND WHITNEY, PHOTOGRAPHERS



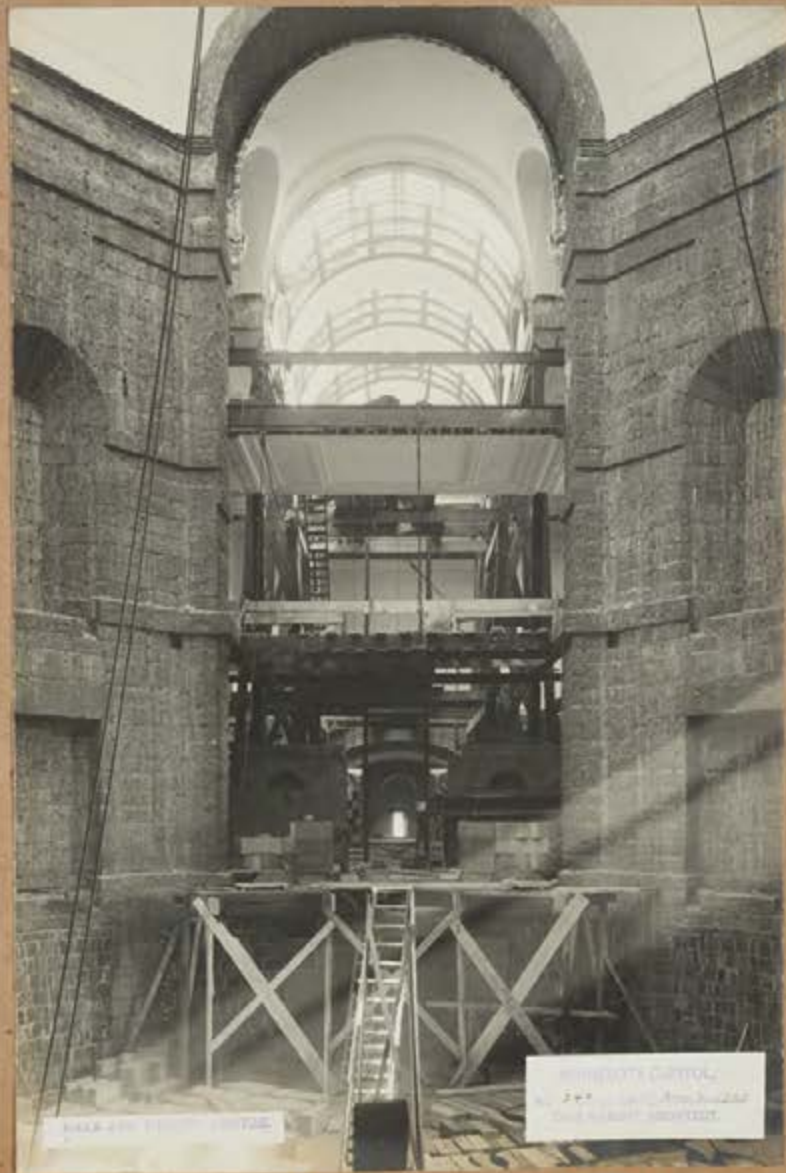
MINNESOTA CAPITOL
No. 37 ... date Nov. 3, 1963
LAC GERRY ARCHIVE



MINNESOTA CAPITOL
No. 38 ... date Nov. 3, 1963
LAC GERRY ARCHIVE



MASSACHUSETTS STATE HOUSE
No. 247
1901
MASSACHUSETTS STATE HOUSE



MASSACHUSETTS STATE HOUSE

MASSACHUSETTS STATE HOUSE
No. 247
1901
MASSACHUSETTS STATE HOUSE





1. Sophie Young House
50 Dawson Dr

2. F. J. Warner House
57 Aurora Dr

3. Carl Albrecht House
54 Dawson Dr

Views of buildings on Lots 1, 2, 3, 4, 5, 6 & 7, Auditor's Sub Div No 10



2. VIEW FROM EAST SIDE

1. Sophie Young House
50 Dawson Dr

3. Carl Albrecht House
54 Dawson Dr



3. VIEW FROM WEST SIDE.

113. Albrecht House & Barn
 7. P. J. Wason
 11. Sophia Young

14. Andrew Co
 18.
 17.

116. John Klein House & Barn
 19. E. Central Av

Kanon Sep. 1905.



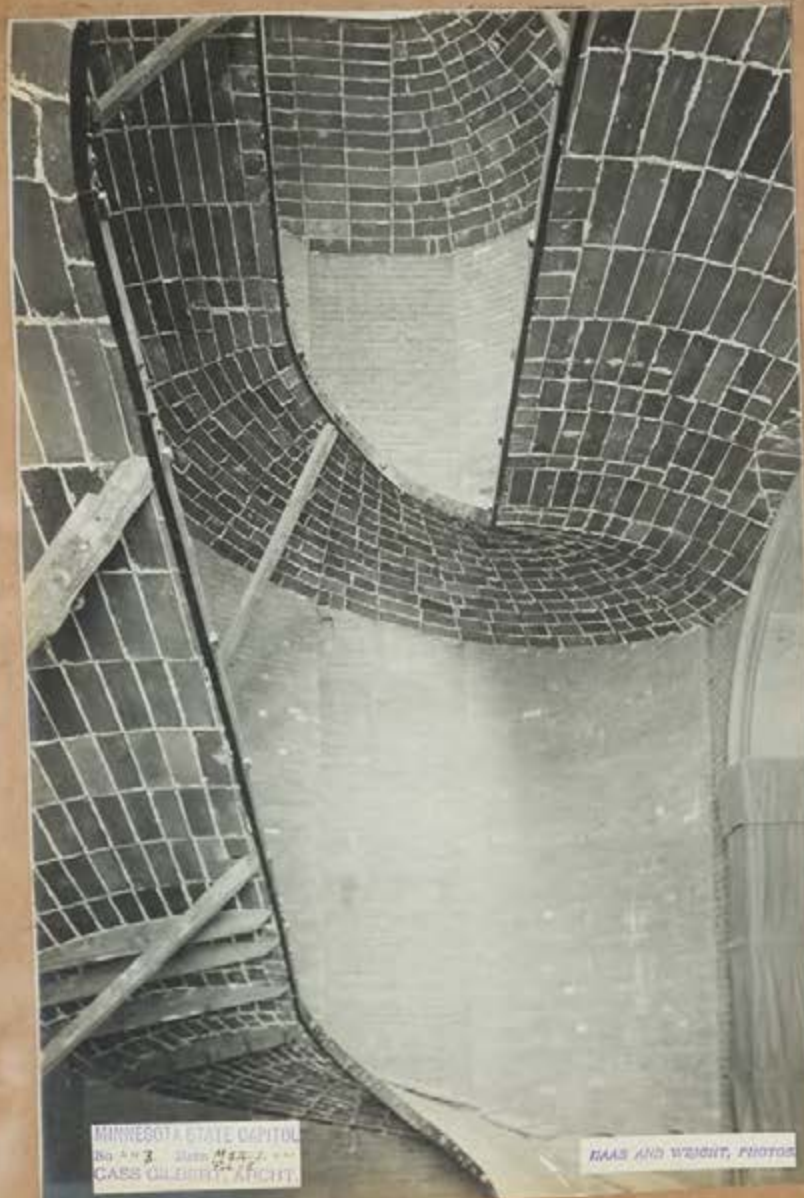
4. VIEW FROM SOUTH SIDE.

11. J. Klein House
 14. E. Central Av

113. Car & Mackman House
 16. E. Central Av

113. P. J. Wason, Old Barn
 1119. E. Central Av

114. Sophia Young, Old Barn
 1111. E. Central Av



MINNESOTA STATE CAPITOL
No. 243. Date 1914.
CASS GILBERT, ARCHT.

HAAS AND WRIGHT, PHOTOS



MINNESOTA STATE CAPITOL
No. 244. Date 1914.
CASS GILBERT, ARCHT.

HAAS AND WRIGHT, PHOTOS

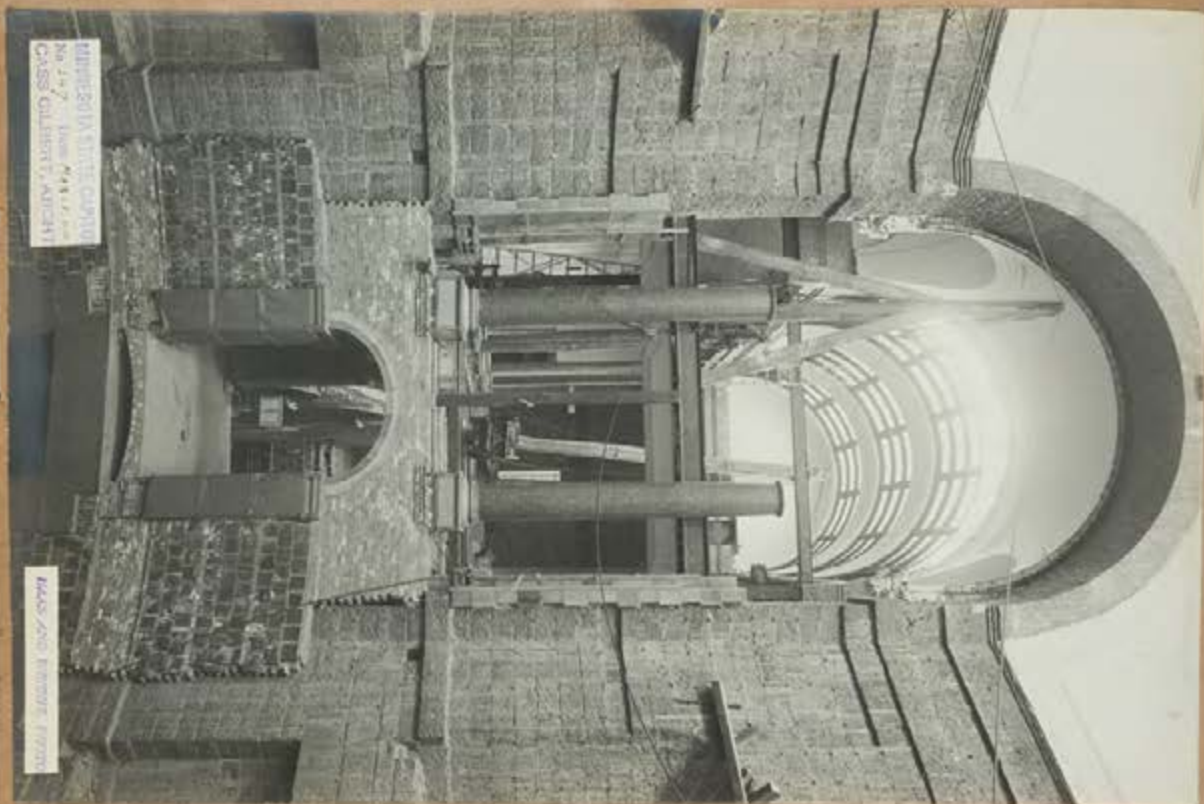


MINNESOTA STATE CAPITOL
No. 196 Date May 1 - 1904
CASS GILBERT, ARCHT



MINNESOTA STATE CAPITOL
No. 195 Date May 1 - 1904
CASS GILBERT, ARCHT

WAGG AND HENRY, PHOTOGR.



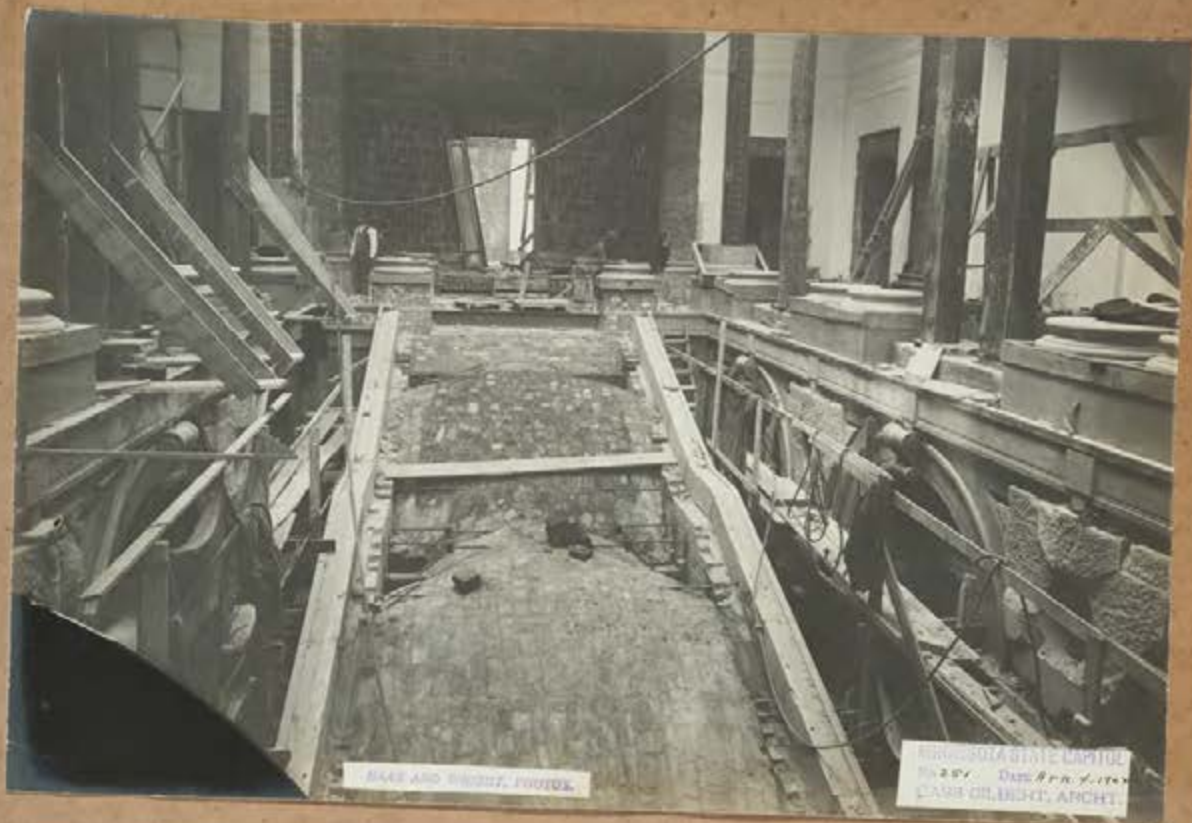
MINNESOTA STATE CAPITOL
NO. 147 - DAY, 1912
CASS GILBERT ARCHT.

MADE BY KODAK PHOTO



MADE BY KODAK PHOTO

MINNESOTA CAPITOL
NO. 150 - DAY, Apr. 4, 1912
CASS GILBERT ARCHT.



BASE AND CROSS, PORTOL.

MINNESOTA STATE CAPITOL
 1852-57. Date 8/10/1857
 CASP. ORLINDI, ARCHT.



MINNESOTA CAPITOL
 NOV. 25 - 1857
 CASP. ORLINDI, ARCHT.

MINNESOTA STATE CAPITOL



EMAS AND VANDERT, PHOTOS.

MINNESOTA CAPITOL.
NO. 22. DATE. 4/16/1904
CASS GILBERT, ARCHTCT.



MINNESOTA STATE CAPITOL
No. 23. DATE. 4/16/1904
CASS GILBERT, ARCHTCT.

EMAS AND VANDERT, PHOTOS.



MINNESOTA STATE CAPITOL
No. 256 Date 4/16/1904
CASS GILBERT, ARCHT.

KIAS AND WRIGHT, PHOTOS



MINNESOTA STATE CAPITOL
No. 255 Date 4/16/1904
CASS GILBERT, ARCHT.

KIAS AND WRIGHT, PHOTOS



MINNESOTA STATE CAPITOL
No 257 Date 4/16/1904
CASS OILBERT, ARCHT.

MAAS AND BROWN, PHOTO



MINNESOTA STATE CAPITOL
No 258 Date May 12, 1904
CASS OILBERT, ARCHT.

MAAS AND BROWN, PHOTO



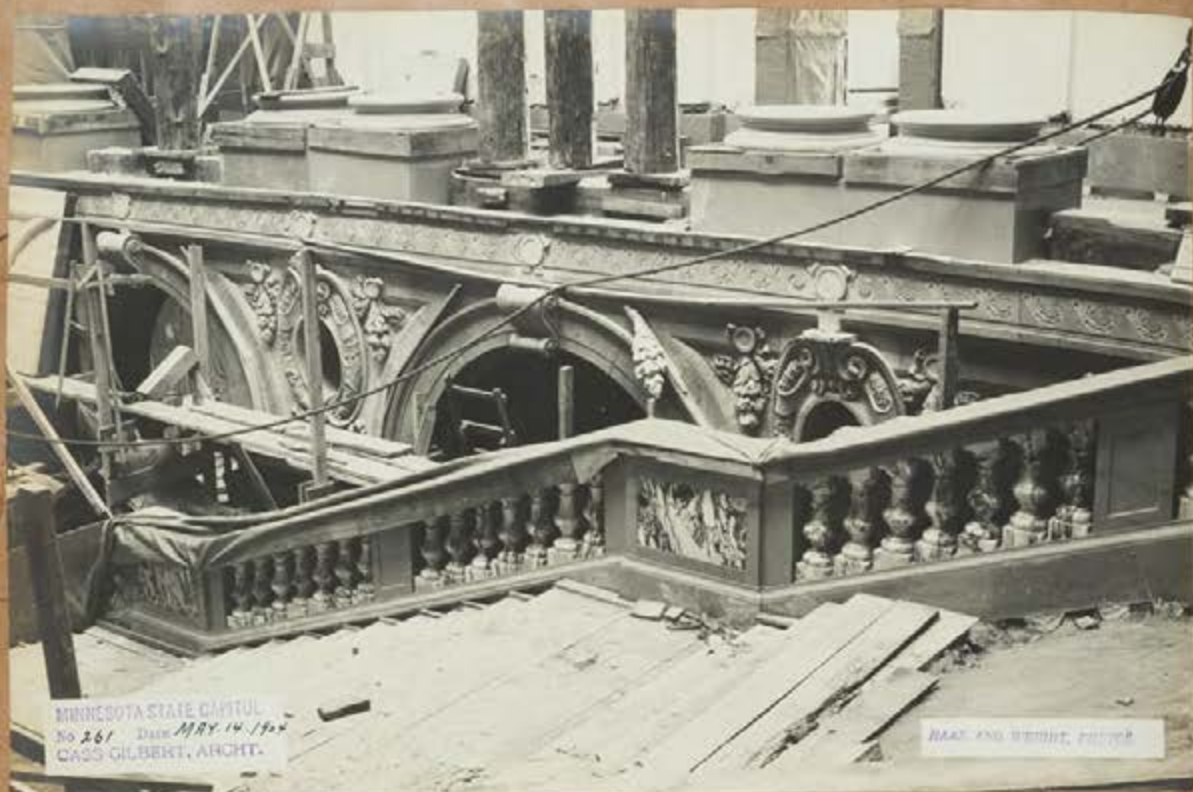
MINNESOTA STATE CAPITOL
No 259 Date May 19, 1905
CASS GILBERT, ARCHT.

CASS AND WRIGHT, PHOTOS.



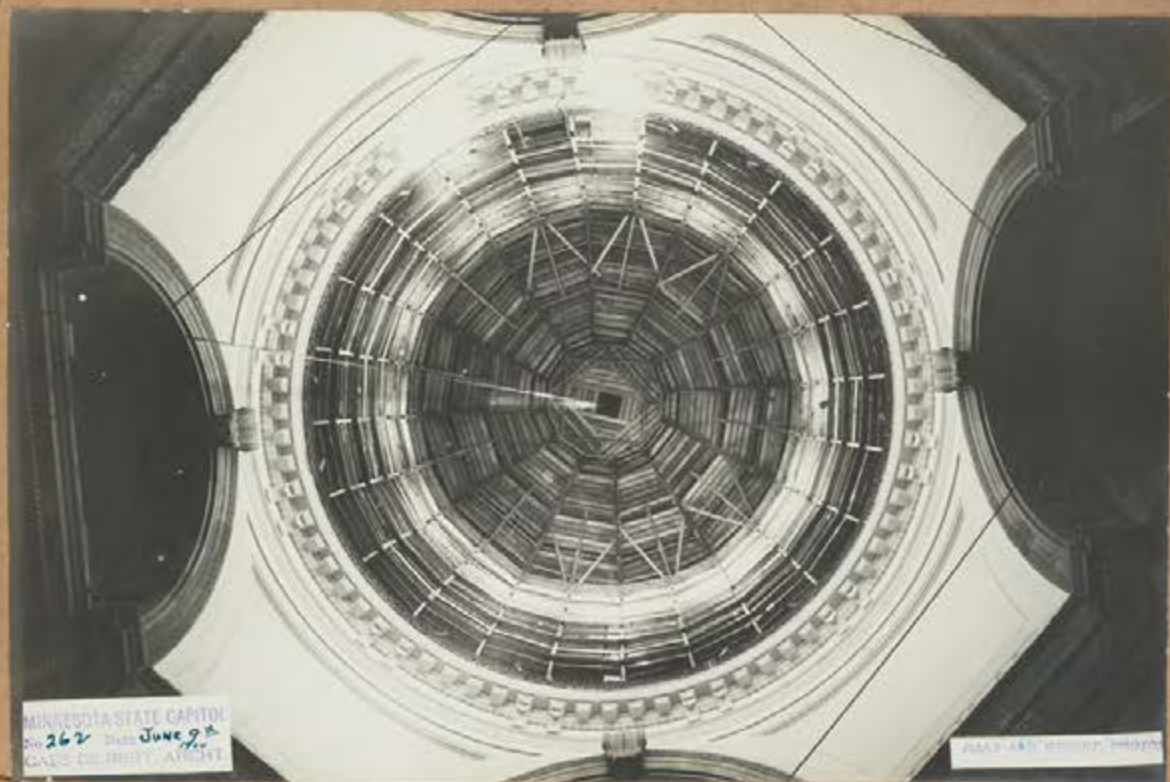
MINNESOTA STATE CAPITOL
No 260 Date May 19, 1905
CASS GILBERT, ARCHT.

CASS AND WRIGHT, PHOTOS.



MINNESOTA STATE CAPITOL
No 261 Date *MAY 14 1902*
CASS GILBERT, ARCHT.

HARK AND WHEAT, PHOTO



MINNESOTA STATE CAPITOL
No 262 Date *June 9th*
CASS GILBERT, ARCHT.

HARK AND WHEAT, PHOTO



MINNESOTA STATE CAPITOL
263 Date 6-9-1944
ASB GILBERT, ARCHT.

ASB GILBERT, ARCHT.



MINNESOTA STATE CAPITOL
264 Date 6-9-1944
ASB GILBERT, ARCHT.

ASB GILBERT, ARCHT.



MINNESOTA STATE CAPITOL
No. 263 Date 6-9-1908
CASS GILBERT, ARCHT.

MAK AND BRIDGE, PHOTOS.



MINNESOTA CAPITOL
No. 266 Date 7/1/08
CASS GILBERT ARCHT.

MAK AND BRIDGE, PHOTOS.



MINNESOTA COUNTY
267 7/1/1904
CROSS STREET, MINNETONKA

BACK AND HEIGHTS, MINNETONKA



#268 WEST END STAIRWAY

AUG 19 1905

HARRIS & WRIGHT PHOTO



#269 EAST END STAIRWAY

AUG 19 1905

HARRIS & WRIGHT PHOTO



MINNESOTA CAPITOL
270 - 1911 Nov 6-10



MINNESOTA CAPITOL
271 - 1911 Nov 6-10



MINNESOTA CAPITOL
No. 222 - City of Minn. U.S.
Geo. Gilbert, Architect



MINNESOTA CAPITOL
No. 222 - City of Minn. U.S.
Geo. Gilbert, Architect



MINNESOTA CAPITOL
No. 27 *Wm. A. Kief*
GILBERT ARCHTCT.



MINNESOTA CAPITOL
No. 27 *Wm. A. Kief*
GILBERT ARCHTCT.

